

# RECYCLING & REFUSE TARP SYSTEMS



**US Tarp**  
Covering America®



**800-249-0297 | USTARP.COM**

# RECYCLING & REFUSE TARP SYSTEMS



## Economy Gantry System

The Economy line is a low-cost solution for covering your roll-off container system. This line offers options for a light-duty system as well as medium-heavy duty systems. Standard Pull-style spring return operation. Upgrade to an electric system with an arm kit style of your choice for ergonomic operation.

### Part Number Format

<b>15101</b>	–	<b>AL4</b>
Model #		Optional Arm Kit (see Page 10 for more options)

#### • 15101-54 Stationary Gantry System – 54" •

- 54" Powder-Coated Steel Frame
- 62" Assembled Height
- For Light-Medium Duty systems
- Covers up to 20 yard containers
- Pull-Style or Upgraded Arm Kit w/Electric Tarp Motor
- Aluminum Open Top Housing

#### • 15101 Stationary Gantry System – 77" •

- 77" Powder-Coated Steel Frame
- 85" Assembled Height
- For Medium-Heavy Duty systems
- Covers up to 30 yard containers
- Pull-Style or Upgraded Arm Kit w/Electric Tarp Motor
- Aluminum Open Top Housing

EZ Switch Kit



Part #12250-WATERPROOF

Frame Mount Offset



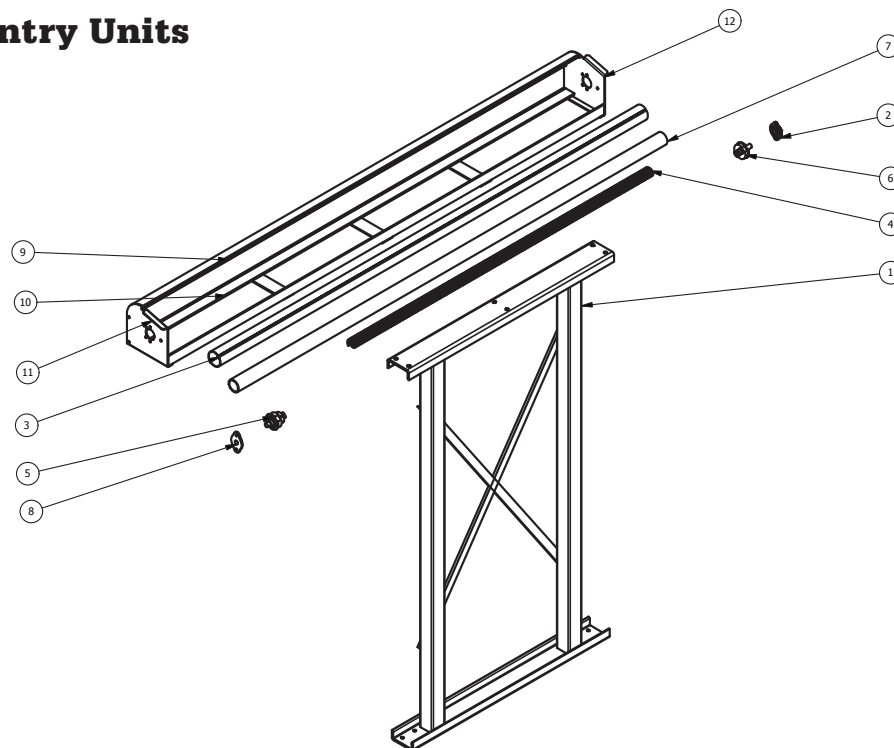
Part #15084

Stationary Mounting Brackets



Part #16313

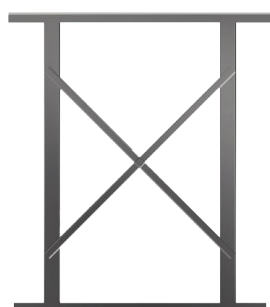
## Economy Gantry Units



REF.	PART #	QTY*	DESCRIPTION
1	14527	1	Stationary Gantry Frame
2	11139	1	3/4" Stamped Steel Flange Bearing
3	13673-100	1	Spring Return Roller Assembly
4	13906	1	Torsion Spring, 84" Wide Housing, 1.5937" I.d., 0.162" Wire Dia., 70" Length Left Hand Wound
5	13923	1	Spring Return Roller Part B
6	13908	1	3" Tarp Axle Cap, Passenger Side With Spool Shaft
7	13929	1	Plastic Pipe 2" Schedule 40 - 24"
8	14010	1	Steel Adapter Plate For Steel Return
9	14870	1	Smooth Front Aluminum Wind Deflector
10	15360	1	Open Top Housing Lower Front Extrusion
11	14823l	1	Open Top Housing End Plate (Left)
12	14823r	1	Open Top Housing End Plate (Right)
**	16313	2	Stationary Mounting Brackets
**	16293	1	Hardware Kit For Mounting Brackets
**	14988-Kit	1	Rope Kit
**	12282	1	J-Hooks
**	H14017	1	Rear Tailgate Latch Kit
**	12250-Waterproof	1	Waterproof EZ Switch Kit (Arm Kit Models Only)

\*Quantity required

### • Specifications •



SPEC	54" STATIONARY SPECS	77" STATIONARY SPECS
Frame Height	54"	77"
Extends	N/A	N/A
Overall Height w/Housing	62"	85"
Weight	225 lbs. (assembled) w/o Tarp or Arm Kit	300 lbs. (assembled) w/o Tarp or Arm Kit
Coverage*	Up to (but not including) 30 Yard Container	Up to (but not including) 40 Yard Container
	*Not Recommended for 30 Yard Containers	*Not Recommended for 40 Yard Containers
	*Not Recommended for containers over 62" tall	*Not Recommended for containers over 85" tall

\*\*Item not shown. Oversized items, over length shipping rates apply.



# RECYCLING & REFUSE TARP SYSTEMS



## Premium Single-Stage Gantry System with PowerPack

The Premium Self-Contained line offers quality systems for an economical price. This self-contained system comes ready to plug and play. It comes standard with a pull-style spring return and electric powerpack. Upgrade to an electric tarp motor with an arm kit of your choice for effortless operation. Our 5-function Wireless Remote is also available.

### Part Number Format

<b>15100</b>	-	<b>AL4</b>	-	<b>WL</b>
Model #		Optional Arm Kit (see Page 10 for more options)		Optional Wireless Remote

#### • 15100 Premium Single-Stage Gantry System •

- **Most Popular Waste Covering Solution**
- **48" Heavy Duty Powder-Coated Steel Frame**
- **Electric over Hydraulic Powerpack System that allows for Plug and Play**
- **60" Assembled Height in Lowered Position; 36" Cylinder Stroke; 96" Raised Height**
- **Covers Up to 40-Yard Containers**
- **Pull-Style or Upgraded Arm Kit with Electric Tarp Motor**
- **98" Wide Aluminum Waste Housing**
- **LED Work Lights included with Arm Kit upgrade**
- **Standard Control Box included**

Standard Control Box



Part #16302

LED Work Lights



Part #15755

Frame Mount Offsets



Part #15084

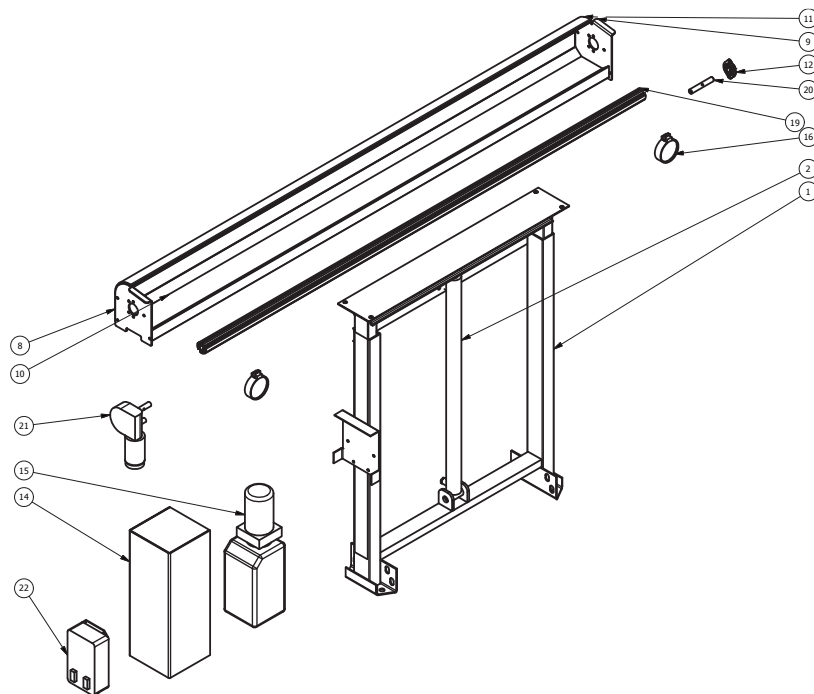
Option  
Wireless Remote



Part #15563



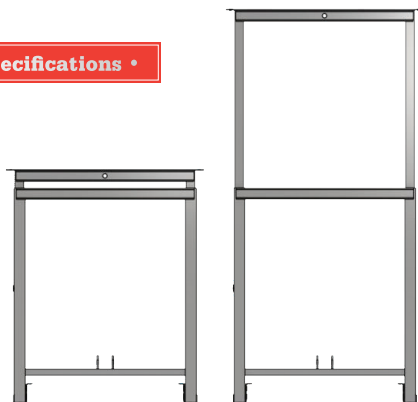
# Premium Single-Stage Gantry System with PowerPack



REF.	PART #	QTY*	DESCRIPTION
1	15080	1	Single State Gantry Frame, 48" Tall Base
2	14838	1	Gantry Cylinder
8	15512L	1	Aluminum Waste Housing End Plate-Left
9	15512R	1	Aluminum Waste Housing End Plate-Right
10	15367	1	Housing Base
11	14870	1	Smooth Front Aluminum Wind Deflector
12	11139	1	3/4" Stamped Steel Flange Bearing
14	15515	1	Steel Housing For 6qt Hydraulic Power Pack Assembly
15	13931	1	Hi-Tower Hydraulic Power Pack With 6qt
16	15755	2	Led 4-1/2" Round Flood Light
19	11200	1	Tarp Axle 101-5/8"
20	11201	1	Spool Shaft, 5 In.
21	13732	1	60:1 Bulletproof Tarp Motor
22	16302	1	Standard Control Box For Gantries
**	16189	1	80a Breaker
**	16244	2	Optional 5/8" Gantry Frame Spacers
**	16281	1	1 & 2 Stage Hardware Kit For Mounting
**	15563	1	Optional 5-Function Wireless Remote And Receiver Assembly
**	16109	1	Wireless Control Box (For Gantries With Wireless Remote)

\*Quantity required

## • Specifications •



SPEC	MEASUREMENT (IN)
Assembled Frame Height	60"
Extends	36"
Overall Height w/Housing	96"
Weight	375 lbs. (assembled) w/o Tarp or Arm Kit
Coverage*	Up to 40 Yard Container
*Not Recommended for all 40 Yard Containers	
*Not Recommended for containers over 96" tall	

\*\*Item not shown. Oversized items, over length shipping rates apply.

# RECYCLING & REFUSE TARP SYSTEMS



## Premium Single-Stage Gantry System – Fully Hydraulic

The Premium Hydraulic line offers fully upgraded and assembled units ready to work. These systems come assembled with Manual Lever operation, 5-Function Wireless remote operation, LED work lights, and US Tarp Bulletproof Hydraulic Tarp Motor. Includes Priority Flow Divider to tap the PTO line.

### Part Number Format

<b>15100</b>	-	<b>P</b>	-	<b>ST4</b>
Model #		Premium Hydraulic		Alternative Arm Kit

### • 15100-P Premium Single Stage Gantry System – Fully Hydraulic •

- 58" Heavy Duty Powder-Coated Steel Frame
- Fully wired and assembled – Just wire to battery and connect to PTO
- 65" Assembled Height in Lowered Position; 36" Cylinder Stroke; 101" Raised Height
- Choose Your Arm Kit (Standard Aluminum 4-Spring Included)
- Priority Flow Divider included for easy hook-up to PTO
- 60:1 Hydraulic Gear Motor included
- Manual Levers and Wireless Remote for Operation Included
- 98" Aluminum Waste Housing
- LED Work Lights included

5-Button Remote



Part #15563

LED Work Lights



Part #15755

Frame Mount Offsets



Part #15084

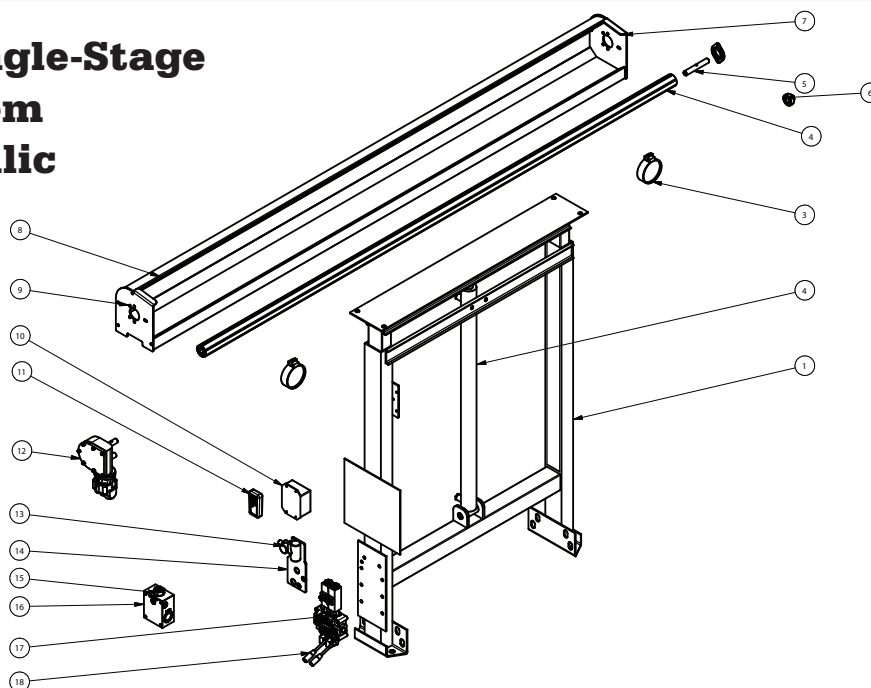
2-Spool Valve



Part #15723



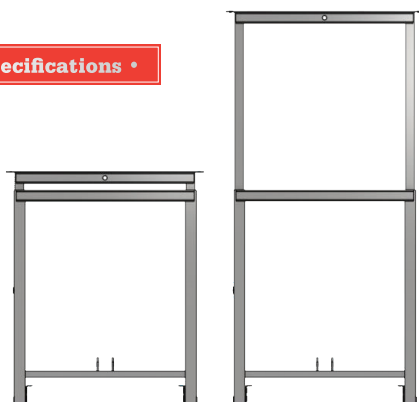
## Premium Single-Stage Gantry System Fully Hydraulic



REF.	PART #	QTY*	DESCRIPTION
1	15080-58	1	58" Single Stage Gantry Frame
2	14838	1	Hydraulic Cylinder; 36" Stroke
3	15755	2	Led Work Lights
4	11200	1	Heavy Duty Tarp Axle; Cut At 96"
5	11201	1	Spool Shaft; 5"
6	11139	1	3/4" Steel Flange Bearing
7	15512R	1	Aluminum Waste Housing Right Endplate
8	14870	1	Heavy Duty Wind Deflector; Cut At 98"
9	15512L	1	Aluminum Waste Housing Left Endplate
10	12250-WP-GANTRY	1	Waterproof Wireless Control Box
11	15563	1	5-Function Gantry Remote And Assembly
12	14370	1	Hydraulic 60:1 Bulletproof Gear Motor
13	16232	1	Relief Valve
14	16233	1	Relief Valve Mounting Bracket
15	15964	1	Flow Regulator
16	15909	1	Flow Diverter
17	15723	1	2 Spool Valve With Electric Actuator
18	15832	2	Levers For Spool Valve
**	16281-HYD	1	1 & 2 Stage Hydraulic Gantry Hardware Kit With External Mount Arms
**	16244	2	Optional 5/8" Gantry Frame Spacer

\*Quantity required

### • Specifications •



SPEC	MEASUREMENT (IN)
Assembled Frame Height	65"
Extends	36"
Overall Height w/Housing	101"
Weight	400 lbs. (assembled) w/o Tarp or Arm Kit
Coverage*	Up to 40 Yard Container
*Not Recommended for all 40 Yard Containers	
*Not Recommended for containers over 101" tall	

\*\*Item not shown. Oversized items, over length shipping rates apply.

# RECYCLING & REFUSE TARP SYSTEMS



## Premium Two-Stage Gantry System

The Premium Two-Stage Gantry models are the "cover anything" solution. Towering 13 feet in the air, covering any container or heaped load comes easy. Offered as a base Pull-Style system, Upgraded Plug and Play Electric Arm Kit, or Fully Hydraulic Unit.

### Part Number Format

<b>14126</b>	—	<b>AL4</b>	—	<b>WL</b>
Model #		Optional Arm Kit (see Page 10 for more options)		Optional Wireless Remote

#### • 14126 Two-Stage Gantry – Self-Contained PowerPack •

- 64" Heavy Duty Powder-Coated Steel Frame
- 72" Assembled Height in Lowered Position; 88" Cylinder Stroke; 162" Raised Height
- Pull-Style or Upgraded Arm Kit w/ Electric Tarp Motor
- 98" Wide Aluminum Waste Housing
- LED Work Lights included with Arm Kit Upgrade
- Standard Control Box included
- Electric over Hydraulic Powerpack system that allows for plug and play

#### • 14126-P Premium Two -tage Gantry – Fully Hydraulic •

- 64" Heavy Duty Powder-Coated Steel Frame
- 72" Assembled Height in Lowered Position; 88" Cylinder Stroke; 162" Raised Height
- Choose Your Arm Kit
- Priority Flow Divider included for easy hook-up to PTO
- 98" Aluminum Waste Housing
- 60:1 Hydraulic Gear Motor included
- Manual Levers and Wireless Remote for Operation included
- LED Work Lights included

Standard Control Box



Part #16302

LED Work Lights



Part #15755

Frame Mount Offsets



Part #15084

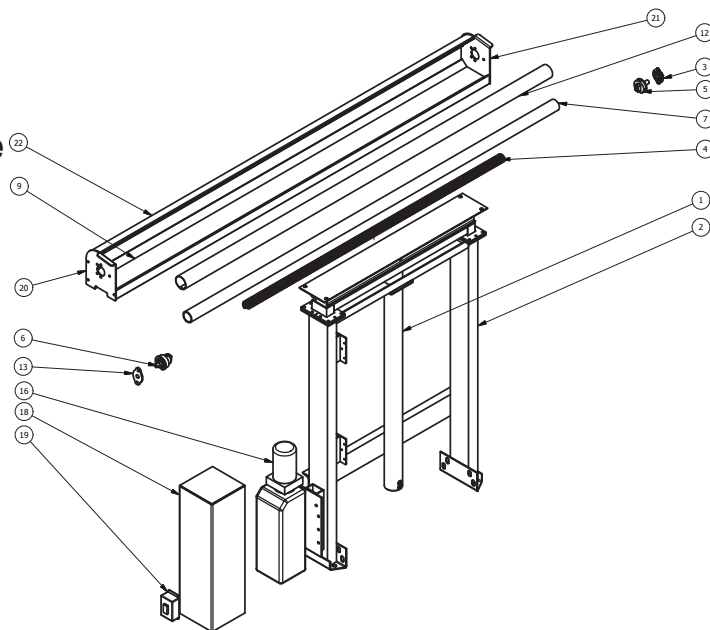
Option  
Wireless Remote



Part #15563



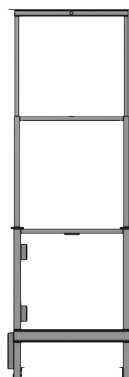
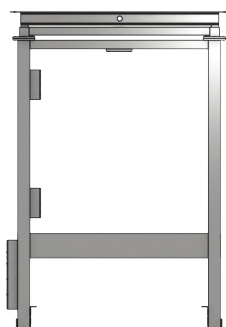
## Premium Two-Stage Fully Hydraulic or Powerpack Available



REF.	PART #	QTY*	DESCRIPTION
1	13901	1	Hi-Tower Hydraulic Cylinder, 88" Stroke
2	112671	1	Hy Roller Frame
3	11139	1	3/4" Stamped Steel Flange Bearing
4	13906	1	Torsion Spring, 84" Wide Housing, 1.5937" I.d., 0.162" Wire Dia., 70" Length Left Hand Wound
5	13908	1	3" Tarp Axle Cap, Passenger Side With Spool Shaft
6	13923	1	Spring Return Roller Part B
7	13929	1	Plastic Pipe 2" Schedule 40 - 24"
9	15367	1	Housing Base
12	13673-100	1	Spring Return Roller Assembly
13	14010	1	Steel Adapter Plate For Steel Return
16	16314	1	Hi-Tower Hydraulic Power Pack W/ 10qt
18	16304	1	Steel Housing For 10qt Hydraulic Power Pack Assembly
19	16310	1	1 & 2 Stage Gantry Pull Style Control Box
20	15512L	1	Aluminum Waste Housing End Plate-Left
21	15512R	1	Aluminum Waste Housing End Plate-Right
22	14870	1	Smooth Front Aluminum Wind Deflector
**	16244	2	Optional 5/8"Gantry Frame Spacer
**	16287	1	1 & 2 Stage Pull-Style Gantry Hardware Kit
**	14988-KIT	1	Rope Kit
**	12282	4	J Hooks
**	H14017	1	Rear Tail Gate Latch Kit
**	16274	1	250A Breaker

\*Quantity required

### • Specifications •



SPEC	MEASUREMENT (IN)
Frame Height	64"
Extends	88"
Overall Height w/Housing	162"
Weight	575 lbs. (assembled) w/o Tarp or Arm Kit
Coverage*	40 Yard Container

\*\*Item not shown. Oversized items, over length shipping rates apply.

# MODEL BREAKDOWN

## Stationary Models (15101)

STATIONARY PULL-STYLE
Not Electric - No controls
<b>NEW</b> - Stationary mounting kit w/brackets
STATIONARY W/ARMS
12250-WATERPROOF
Not wired
<b>NEW</b> - Stationary mounting kit w/brackets
NEW - 54" STATIONARY (15101-54)
Pull-Style or with Arms
<b>NEW</b> - stationary mounting kit w/brackets
Medium-duty design - lighter gauge steel

## Single Stage Models (15100)

SINGLE STAGE PULL-STYLE
Hydraulic Steel Housing (15515)
Mini-Control Box mounted for gantry control
Wired and ready to attach to battery
SINGLE STAGE W/ ARMS - NO WIRELESS REMOTE
Hydraulic Steel Housing (15515)
Control Box (16302)
LED Lights
Wired and ready to attach to battery
Easily Upgraded to Wireless Remote in Future
SINGLE STAGE W/ ARMS - WIRELESS REMOTE
Hydraulic Steel Housing (15515)
Control Box w/ Wireless Remote (16109)
LED Lights
Wired and ready to attach to battery
SINGLE STAGE PREMIUM - ALL HYDRAULIC
Taller 58" Frame
Hydraulic Tarp Motor
Hydraulic Cylinder
Hydraulic PTO Operation

## Two Stage Models (14126)

TWO STAGE PULL-STYLE
Hydraulic Steel Housing for 2-Stage (16304)
Mini-Control Box mounted for gantry control
Wired and ready to attach to battery
TWO STAGE W/ ARMS - NO WIRELESS REMOTE
Hydraulic Steel Housing for 2-Stage (16304)
Control Box (16302)
LED Lights
Wired and ready to attach to battery
Easily Upgraded to Wireless Remote in Future
TWO STAGE W/ ARMS - WIRELESS REMOTE
Hydraulic Steel Housing for 2-Stage (16304)
Control Box w/ Wireless Remote (16109)
LED Lights
Wired and ready to attach to battery
TWO STAGE PREMIUM - ALL HYDRAULIC
Hydraulic Tarp Motor
Hydraulic Cylinder
Hydraulic PTO Operation

## OPTIONAL ARM KITS

Polished Aluminum  
4-Spring External Mount Arm Kit  
Up to 24'



Add -AL4 to System #  
Option: Add -AL5 to System #  
Spring Up to 26'

Galvanized Steel  
4-Spring External Mount Arm Kit  
Up to 24'



Add -ST4 to System #  
Option: Add -ST5 to System #  
5 Spring Up to 26'

Bulletproof Aluminum  
4-Spring External Mount Arm Kit  
Up to 24'



Add -BP4 to System #  
Option: Add -BP5 to System #  
5 Spring Up to 26'

Polished Aluminum 7-Spring  
Fender Mount Arm Kit  
Up to 26'



Add -AL7 to System #

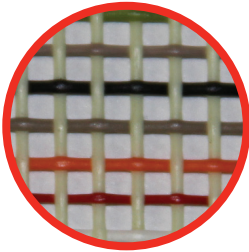
Galvanized Steel 7-Spring  
Fender Mount Arm Kit  
Up to 26'



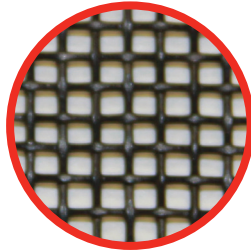
Add -ST7 to System #



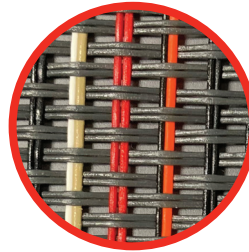
# TARP OPTIONS



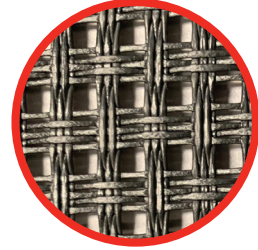
MULTI COLOR MESH



BLACK MESH



MONSTER MESH



ARMOR MESH

## Max Tarp Lengths for Standard Gantry Housing

TARP MATERIAL	MAX LENGTH FOR STANDARD HOUSING
<b>Black Mesh:</b> Hemmed w/Reinforcement	33 ft
<b>Monster Mesh:</b> - Hemmed w/Reinforcement	28 ft
<b>Armor Mesh:</b> - Hemmed w/Reinforcement	22 ft
<b>18oz Vinyl:</b> - Hemmed w/Reinforcement	33 ft

## Width Information

GANTRY EQUIPMENT	WIDTH
Housing	98.0 in
Axle	96.0 in
Recommended Tarp	94.0 in
Gantry Feet I.D.	35.5 in

## System Requirements and Recommendations

WHAT IS REQUIRED / RECOMMENDED?	MEASUREMENT	NOTE
<u>Required:</u>		
Distance between Cab and other Equipment	<10 inches	Hydraulic Cover is 9" Wide
Chassis Width	<35.5 inches	
<u>Recommended:</u>		
Tarp Width	94 inches	If wider is requested, inform them of consequences*
Gantry <u>Frame</u> Spacing between Cab	<4 inches	Hydraulic Cover will be mounted closer (~1 inch)
Arm Kit install Length	n/a	Install for longest container; let arms rest behind for shorter containers

- \*1) Tarp rolls on axle bolts - potential for wear  
 2) Tarp binds more easily on end plates





phone:  
800-249-0297  
fax:  
269-639-3015  
email:  
[Sales@USTarp.com](mailto:Sales@USTarp.com)

USTARP-R&R-1K 2/22

# WE'VE GOT YOU COVERED.

US Tarp® • PO Box 935 • South Haven, MI 49090

©2021 US Tarp. All rights are reserved. No part of this publication may be reproduced without prior permission.

All Manufacturers' names, numbers, symbols, and descriptions are used for reference purposes only, and it does not imply that any part listed is the product of these manufacturers.