

TRADITIONAL HD TARPS

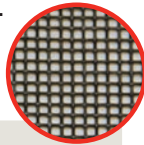


Our handsewn heavy duty tarps are made out of PVC-coated polyester or polyethylene, designed with a woven mesh fabric or vinyl. They are tough and durable as well as resistant to UV rays and chemicals.

Mesh Tarps

Black Mesh

The industry standard cargo control mesh. Medium weight, PVC-coated polyester recommended for rock, sand, gravel, and brush.



MATERIAL CODE	COLORS AVAILABLE
-BM	Black

Monster Mesh

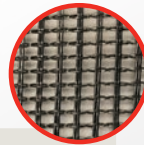
Heavyweight tightly woven mesh with 50% more threads than our HD. PVC-coated polyester. Perfect for refuse and storm clean-up applications.



MATERIAL CODE	COLORS AVAILABLE
-MM	Multi-Color

Woven Mesh

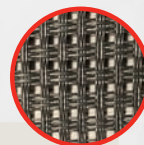
Medium weight, open PVC-coated polyester mesh that provides high-air flow to reduce wind whip. Preferred for coarse commodities at highway speeds.



MATERIAL CODE	COLORS AVAILABLE
-WM	Black

Armor Mesh

Severe duty block woven 5x5 PVC-coated polyester mesh. Provides outstanding performance in recycling, refuse, demo, and storm clean-up applications.

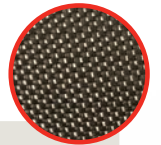


MATERIAL CODE	COLORS AVAILABLE
-AM	Black

Vinyl & Canvas Tarps

Asphalt Lumite

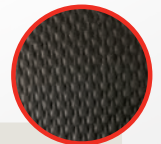
Lightweight and water-resistant polypropylene fabric. Rated up to 350°F, excellent for asphalt hauling applications.



MATERIAL CODE	COLORS AVAILABLE
-LU	Black

18 oz Black Vinyl

The industry standard tarp fabric preferred for asphalt hauling and agricultural applications. PVC-coated polyester.



MATERIAL CODE	COLORS AVAILABLE
-BV	Black

22 oz Black Vinyl

Severe duty, heavier weight and more durable version of our 18 oz vinyl for extended tarp life. PVC-coated polyester.



MATERIAL CODE	COLORS AVAILABLE
-22BV	Black

RFL Coated Canvas

Severe duty asphalt tarp. Tightly woven, coated polyester canvas. Rated to 400°F and stays flexible in cold weather.



MATERIAL CODE
-RFL

Tarp Order Forms-
<https://www.ustarp.com/resources/T>

- Agricultural Tarp
- Cable Tarp
- HD Flapped Tarp
- HD Standard Tarp
- Side Dump Tarp
- Standard Tarp
- Throw Tarp

US Tarp has new, completely revised order forms available on the website. Download to keep on hand, so you will always be prepared to take dimensions when your customer is interested in a quote.

Ordering a Tarp is Easy

While the process of ordering a tarp can seem daunting at first, US Tarp is dedicated to empowering our distributors with the ease to confidently place orders for customers. Our part numbers are structured with our distributors in mind, so you and your customers will always know exactly what you are ordering.

Tarp Part Numbering System

Example



72"	10'	26'	BM – Black Mesh	Blank – No Flaps	S – Spline in Tarp Front
78"	12'	28'	WM – Woven Black Mesh	2F – 2 Flaps	P – Pull Style
84"	14'	30'	MM – Monster Mesh	3F – 3 Flaps	N – No Pocket
90"	16'	32'	AM – Armor Mesh		T – Throw Tarp
96"	18'	34'	RFL – RFL Coated Canvas		C – Custom
	20'	36'	LU – Asphalt Lumite		COMBO – Spline & Grommets
	22'	38'	BV – 18 oz Black Vinyl		
	24'		22BV – 22 oz Black Vinyl		

Measuring Length & Width

For Front-to-Back Flip Tarps, the general rule is to add 2 feet to the length being covered and subtract 4 inches from the distance between the mounting plates.

phone:
800-249-0297
fax:
269-639-3015
email:
Sales@USTarp.com