

WELDED TARPS

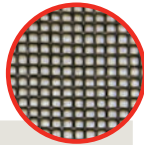


Our welded tarps are made out of PVC-coated polyester or polyethylene, designed with a woven mesh fabric or vinyl. They are tough and durable as well as resistant to UV rays and chemicals.

Mesh and Vinyl Tarps

Standard Black Mesh

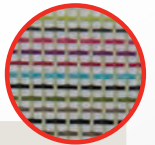
The industry standard cargo control mesh. Medium weight, PVC-coated polyester recommended for rock, sand, gravel, and brush.



MATERIAL CODE	COLORS AVAILABLE
-BM	Black

Multi Color Mesh

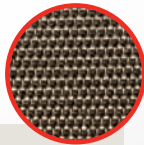
The same material as our 18 oz Black Vinyl but in a variety of colors. PVC-coated polyester



MATERIAL CODE	COLORS AVAILABLE
-MC	Multi-color

ProTec Mesh

Lightweight polypropylene mesh. Perfect for medium-duty construction and landscaping



MATERIAL CODE	COLORS AVAILABLE
-PTM	Black

18 oz Black Vinyl

The industry standard tarp fabric preferred for asphalt hauling and agricultural applications. PVC-coated polyester.



MATERIAL CODE	COLORS AVAILABLE
-BV	Black

Tarp Order Forms-
<https://www.ustarp.com/resources/>

- Agricultural Tarp
- Cable Tarp
- HD Flapped Tarp
- HD Standard Tarp
- Side Dump Tarp
- Standard Tarp
- Throw Tarp

US Tarp has new, completely revised order forms available on the website. Download to keep on hand, so you will always be prepared to take dimensions when your customer is interested in a quote.

Ordering a Tarp is Easy

While the process of ordering a tarp can seem daunting at first, US Tarp is dedicated to empowering our distributors with the ease to confidently place orders for customers. Our part numbers are structured with our distributors in mind, so you and your customers will always know exactly what you are ordering.

Tarp Part Numbering System

Example

ST- **84** - **18** - **MM** - **2F** - **P**
 Tarp Width (in) Tarp Length (ft) Material Flaps Tarp Style

Tarps with Grommets Down the Side

Example

STP - **84** - **18** - **MC** - **2F** - **P**
 Tarp Width (in) Tarp Length (ft) Material Flaps Tarp Style

72"	10'	26'	BM - Standard Black Mesh	Blank - No Flaps	S - Spline in Tarp Front
78"	12'	28'	PTM - ProTec Mesh	2F - 2 Flaps	P - Pull Style
84"	14'	30'	MC - Multi Color Mesh	3F - 3 Flaps	C - Custom
90"	16'	32'	BV - Black Vinyl		COMBO - Spline & Grommets
96"	18'	34'			STP - Grommets Darn Side
	20'	36'			
	22'	38'			
	24'				

Measuring Length & Width

For Front-to-Back Flip Tarps, the general rule is to add 2 feet to the length being covered and subtract 4 inches from the distance between the mounting plates.

phone:
 800-249-0297
 fax:
 269-639-3015
 email:
Sales@USTarp.com