

# Severe Duty Kits & Parts



Sometimes Heavy Duty just won't cut it and that's where US Tarp's Severe Duty system comes in. Covering trailer lengths of up to 54 feet, our Severe Duty kits and parts are built for the long haul and will keep your load safe and secure for the miles ahead.

This system excels in applications such as: Gondola Trailers, Open Top Trailers, Storm Cleanup, Refuse Transfer Trailers, as well as Round Bottom Rubble Tubs.

A strong system needs an equally strong tarp and US Tarp provides a variety of options, such as our industry standard Black Mesh, our heavyweight Monster Mesh, and our severe duty block woven Armor Mesh.



**Phone: 800-249-0297**  
**Fax: 269-639-3015**  
**Email: [Sales@USTarp.com](mailto:Sales@USTarp.com)**

PART #	RATED TO:	DESCRIPTION
--------	-----------	-------------

### SEVERE DUTY SYSTEMS\*

16518	40'	12-Spring Severe Duty System with Two-Piece Arms and 16' Uppers
16502	48'	16-Spring Severe Duty System with Two-Piece Arms and 16' Uppers
16517	48'	16-Spring Severe Duty System with 24' HD Bulletproof Arms
16516	54'	16-Spring Severe Duty System with Two-Piece Arms and 22' Uppers

### SEVERE DUTY SPRING ASSEMBLIES

16473	40'	12-Spring Underbody Assembly for Two-Piece Arm; Driver's Side
16474	40'	12-Spring Underbody Assembly for Two-Piece Arm; Passenger's Side
16469	48'	16-Spring Underbody Assembly for Two-Piece Arm; Driver's Side
16470	48'	16-Spring Underbody Assembly for Two-Piece Arm; Passenger's Side
16485	48'	16-Spring Underbody Assembly for HD Bulletproof; Driver's Side
16486	48'	16-Spring Underbody Assembly for HD Bulletproof; Passenger's Side
16469-HD	54'	16-Spring HD Underbody Assembly for Two-Piece Arm; Driver's Side
16470-HD	54'	16-Spring HD Underbody Assembly for Two-Piece Arm; Passenger's Side

### SEVERE DUTY ARM KITS\*\*

16476	40'	12-Spring Severe Duty Underbody Arm Kit with Two-Piece Lower & 16' Uppers
16527	48'	16-Spring Severe Duty Underbody Arm Kit with Two-Piece Lower & 16' Uppers
16522	48'	16-Spring Severe Duty Underbody Arm Kit with Two-Piece Lower & 16' Uppers
16475	54'	16-Spring Severe Duty Underbody Arm Kit with Two-Piece Lower & 16' Uppers

### SEVERE DUTY ARM HOLD DOWN KITS

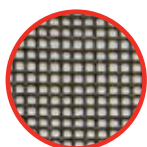
16599	-	Arm Restraint Kit for Two-Piece Arm Kits with Cable
16505	-	Arm Strap Kit for Two-Piece Arm Kits with 1" Strapping
16602	-	Arm Restraint Kit for HD Bulletproof Arm Kits with Cable
16519	-	Arm Strap Kit for HD Bulletproof Arms with 1" Strapping

\*Assembled Scrap Hauler Housing for 102" Body

\*\*Arm Kits do not include Arm Hold Down Kits

## Tarp Options

All Tarp Options Available in  
US Tarp's Parts Catalog



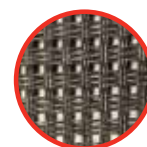
### BLACK MESH & MULTI-COLOR MESH

The industry standard cargo control mesh. Medium weight, PVC-coated polyester recommended for rock, sand, gravel, and brush.



### MONSTER MESH

Heavyweight tightly woven mesh with 50% more threads than our HD. PVC-coated polyester. Perfect for refuse and storm clean-up applications.



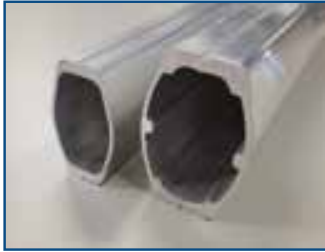
### ARMOR MESH

Severe duty block woven 5x5 PVC-coated polyester mesh. Provides outstanding performance in recycling, refuse, demo, and storm clean-up applications.

# Severe Duty Parts

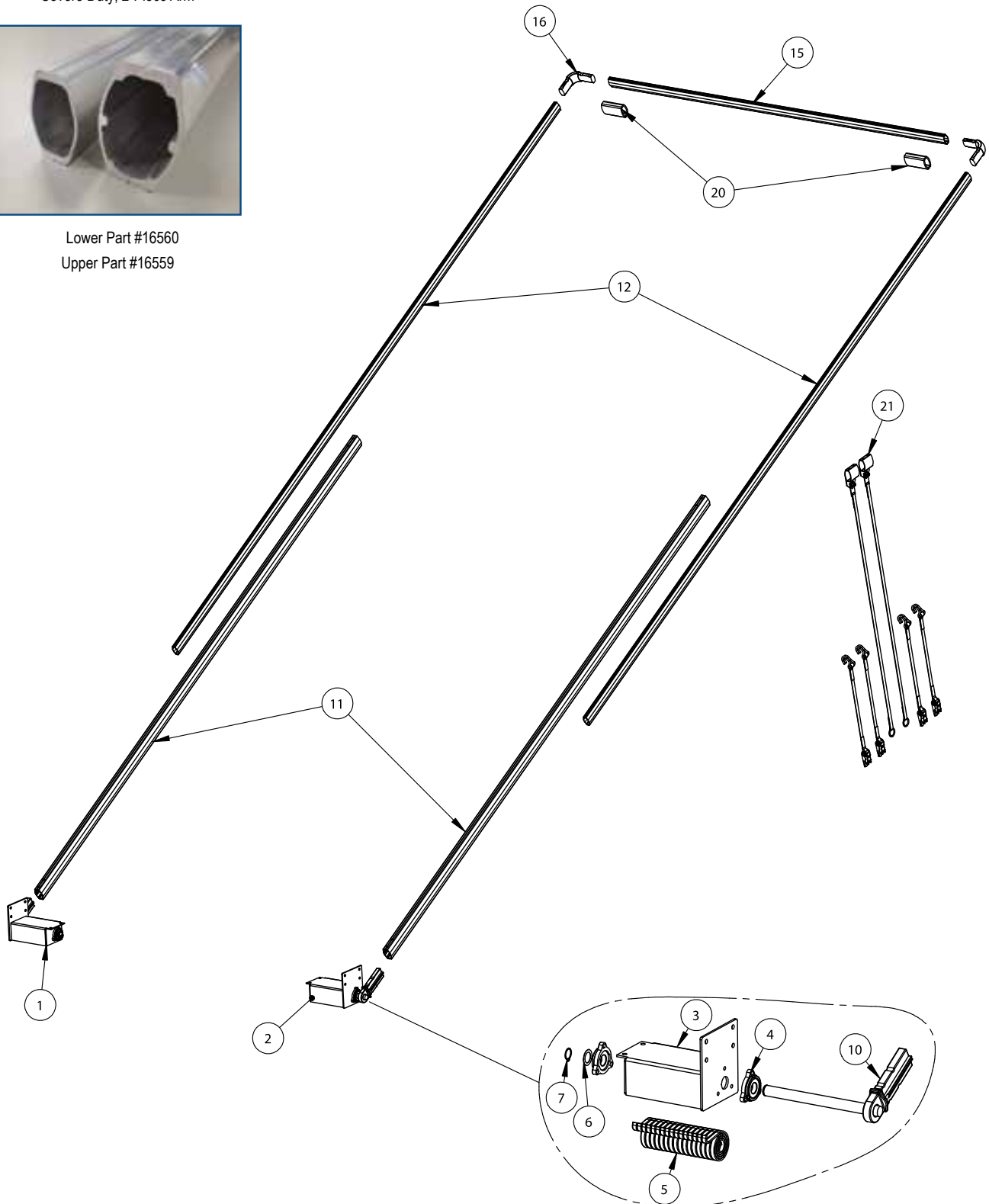
## Two-Piece Arm Breakdown

Severe Duty, 2-Piece Arm



Lower Part #16560

Upper Part #16559



# Severe Duty Parts

## Two-Piece Arm Breakdown

REF.	QTY	PART #	DESCRIPTION
------	-----	--------	-------------

### SEVERE DUTY 2-PIECE ARM KIT

1	1	16473	12-Spring Severe Duty Spring Assembly for 2-Piece Arm; Driver's Side
1	1	16469	16-Spring Severe Duty Spring Assembly for 2-Piece Arm; Driver's Side
1	1	16469-HD	16-Spring Severe Duty Spring Assembly for 2-Piece Arm; Driver's Side 48' & Over
2	1	16474	12-Spring Severe Duty Spring Assembly for 2-Piece Arm; Passenger's Side
2	1	16470	16-Spring Severe Duty Spring Assembly for 2-Piece Arm; Passenger's Side
2	1	16470-HD	16-Spring Severe Duty Spring Assembly for 2-Piece Arm; Passenger's Side 48' & Over
11	2	16561	104" Severe Duty Lower Arm
11	2	16560	160" Severe Duty Lower Arm
12	2	16555	192" Severe Duty Lower Arm
12	2	16559	264" Severe Duty Upper Arm
15	1	16558	103" Severe Duty Cross Tube
16	2	16557	Severe Duty Upper Corner
20	2	16556	Severe Duty Centering Flange
21	1	16599	Arm Strap Kit for 2-Piece Severe Duty Arms
**	2	14835	Open Top Support Brace

### SEVERE DUTY 2-PIECE SPRING ASSEMBLY

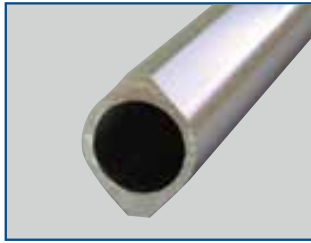
3	1	16473	12-Spring Housing; Driver's Side
3	1	16474	12-Spring Housing; Passenger's Side
3	1	16467	16-Spring Housing; Driver's Side
3	1	16468	16-Spring Housing; Passenger's Side
3	1	16467-HD	16-Spring Housing HD; Driver's Side
3	1	16468-HD	16-Spring Housing HD; Passenger's Side
4	2	47800	1-1/4" 3-Bolt Cast Flange Bearing
5	12 or 16	11121	Spiral Torsion Spring
6	1	11141	Stainless Steel Bushing
7	1	11142	External Retaining Ring
10	1	16562	12-Spring Severe Duty Lower Casting for 2-Piece Arm; Driver's Side
10	1	16563	12-Spring Severe Duty Lower Casting for 2-Piece Arm; Passenger's Side
10	1	16553	16-Spring Severe Duty Lower Casting for 2-Piece Arm; Driver's Side
10	1	16554	16-Spring Severe Duty Lower Casting for 2-Piece Arm; Passenger's Side

\*\*Item not shown. \*Oversized items, over length shipping rates apply.

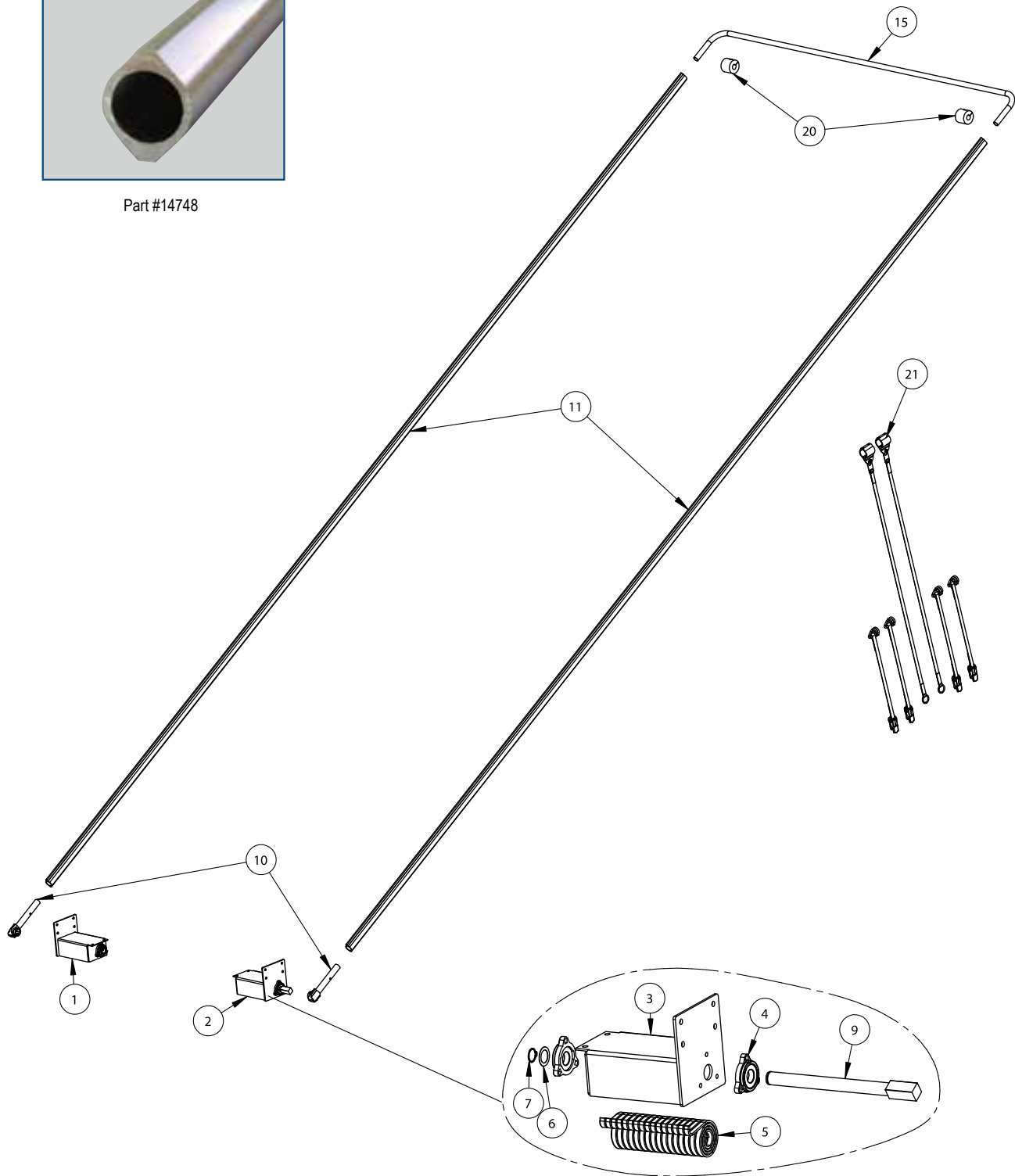
# Severe Duty Parts

## One-Piece Arm Breakdown

HD Bulletproof, 1-Piece Arm



Part #14748



# Severe Duty Parts

## One-Piece Arm Breakdown

REF.	QTY	PART #	DESCRIPTION
<b>SEVERE DUTY 1-PIECE ARM KIT</b>			
1	1	16485	16-Spring Severe Duty Spring Assembly for 1-Piece Arm; Driver's Side
2	1	16486	16-Spring Severe Duty Spring Assembly for 1-Piece Arm; Passenger's Side
10	2	15717	Underbody Bulletproof Arm Casting
11	2	14748	24ft HD Bulletproof Arm
15	1	14522	Steel 1-Piece Cross Tube for 102" Trailers(108" CD)
20	2	13632	Black Rubber Bumper for Steel Cross Tube w/ Bolt
21	1	16602	Arm Strap Kit for 1-Piece Severe Duty Arms
**	2	14835	Open Top Housing Support Brace

### SEVERE DUTY 1-PIECE SPRING ASSEMBLY

3	1	16467	16-Spring Housing; Driver's Side
3	1	16468	16-Spring Housing; Passenger's Side
4	2	47800	1-1/4" 3-Bolt Cast Flange Bearing
5	16	11121	Spiral Torsion Spring
6	1	11141	Stainless Steel Bushing for Pivot Pin
7	1	11142	External Retaining Ring for Pivot Pin
9	1	16490	16-Spring Shaft for 1-Piece Arm; 1-1/4" Sq Connector

\*\*Item not shown. \*Oversized items, over length shipping rates apply.



phone: 800-249-0297 | fax: 269-639-3015  
email: [Sales@USTarp.com](mailto:Sales@USTarp.com)