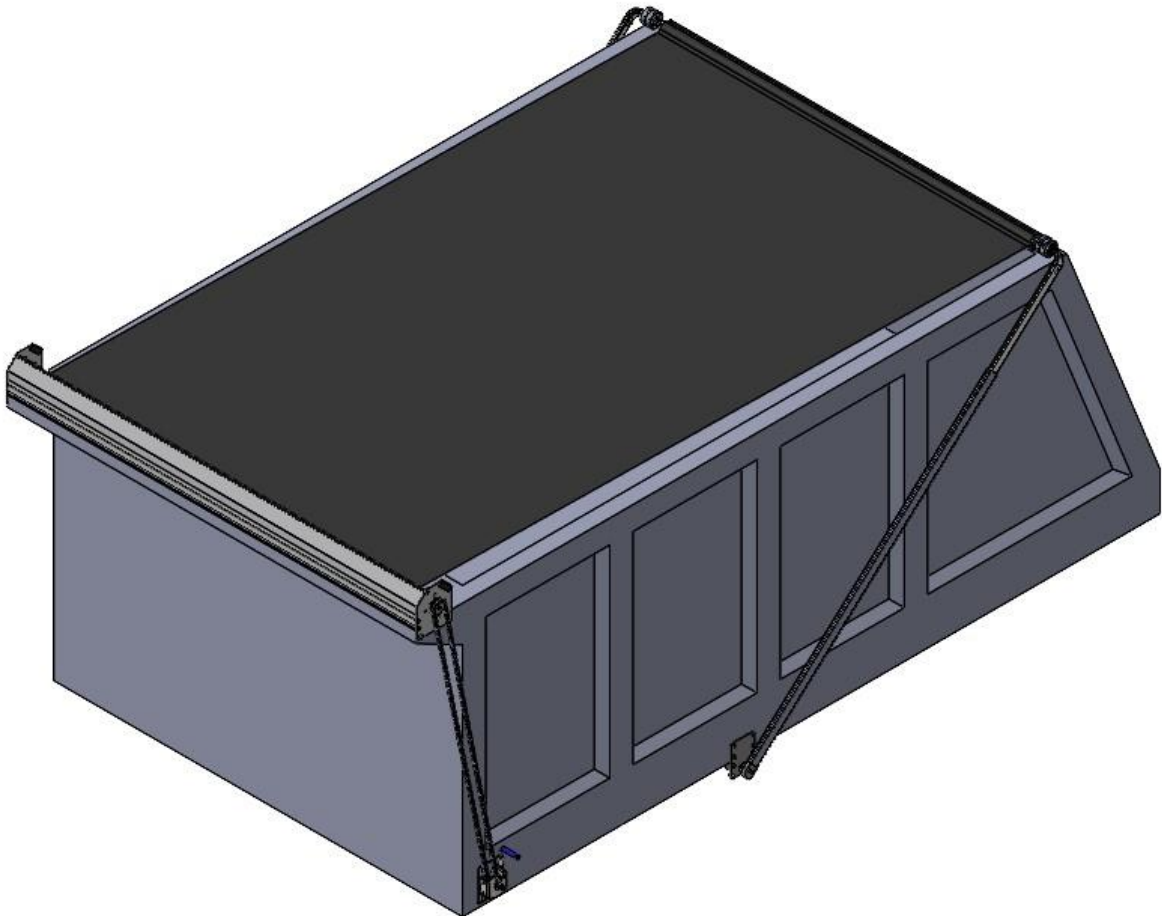


# Ground Level Crank

## INSTALLATION INSTRUCTION MANUAL



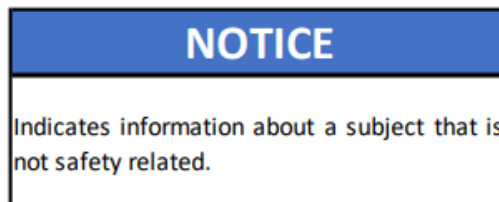
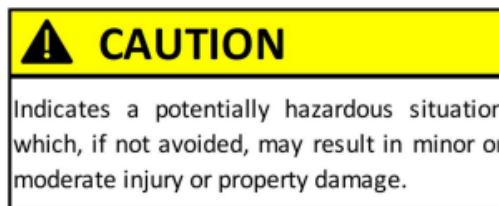
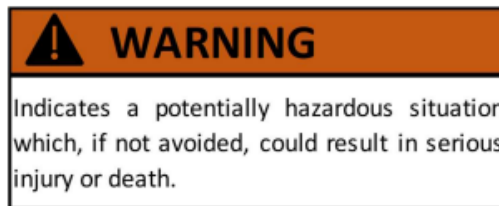
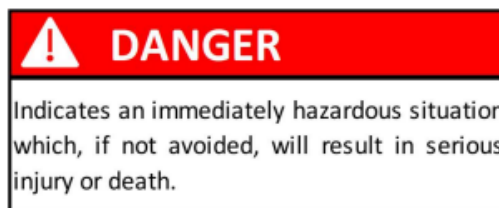
# Table of Contents

SAFETY.....	3
STEP 1: INSTALLING THE SPROCKET SHAFT .....	4
STEP 2: FINDING THE CRANK BOX POSITION .....	4
STEP 3: INSTALLING THE CHAIN .....	5

# SAFETY

Read this section carefully before proceeding. The following symbols may appear prior to certain safety related assembly and installation steps described in this manual.

FAILURE TO OPERATE AND INSTALL THIS UNIT AS INSTRUCTED MAY RESULT IN SERIOUS INJURY OR DEATH.



## Step 1: Installing the Sprocket Shaft

On the driver's side of the dump box, insert the 18 tooth sprocket shaft assembly through the mounting bracket and into the tarp axle. Press the tarp axle cap (1) into the tarp axle (2) so that it sits flush with the axle. Mount the bearing (3) to the mounting bracket (4) using 5/16" x 3/4" hex bolts and hex nuts. (Figure 1.1)

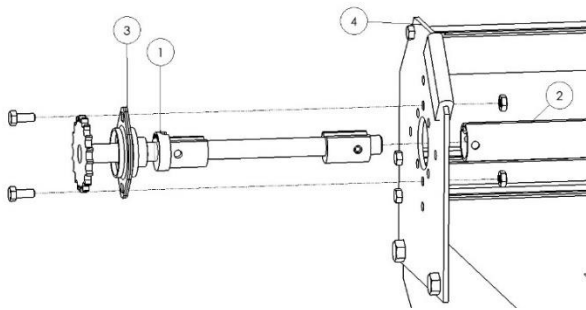


Figure 1.1

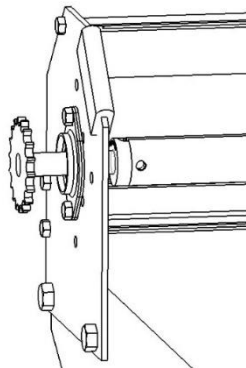


Figure 1.2

### NOTICE

Do not drill and mount the sprocket shaft to the tarp axle until after the crank box has been mounted and the gears have been aligned.

## Step 2: Finding Crank Box Position

The position of your crank box will be limited by the length of the chain. To find the approximate position of the crank box hang the chain from the sprocket shaft and feed the chain into the crank box. Move the crank box to a position where it can be mounted onto the dump box ensuring that there will be some slack in the chain so that it can be connected. The ideal position for the crank box is on the bottom rail closest to the front of the dump box. (Figure 2.1)

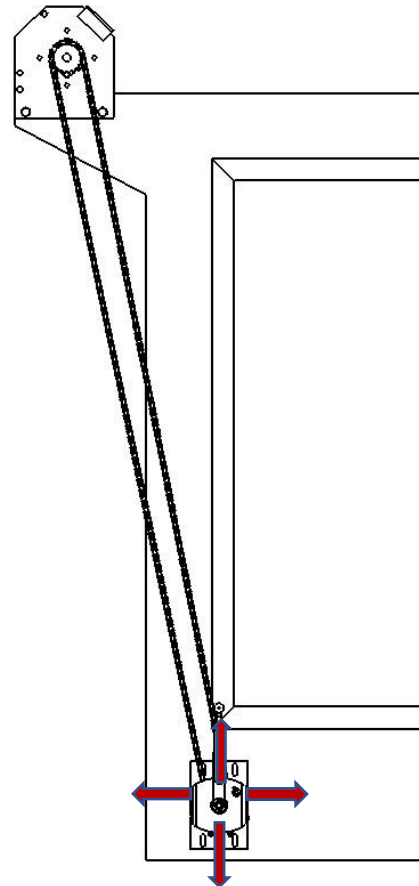


Figure 2.1

Once the ideal position of the crank box has been located mark the dump box at the bottom of each slot on the crank box. In the hardware kit provided there are 4, 3/8" x 1-1/2" self-tapping screws. The installer may choose to drill 3/8" through holes at each of the marked locations and use the provided nylock nuts and washers to secure the crank box to the dump box or use an 11/32" drill bit to pre-drill a pilot hole for the self-tapping screws to be drilled into.

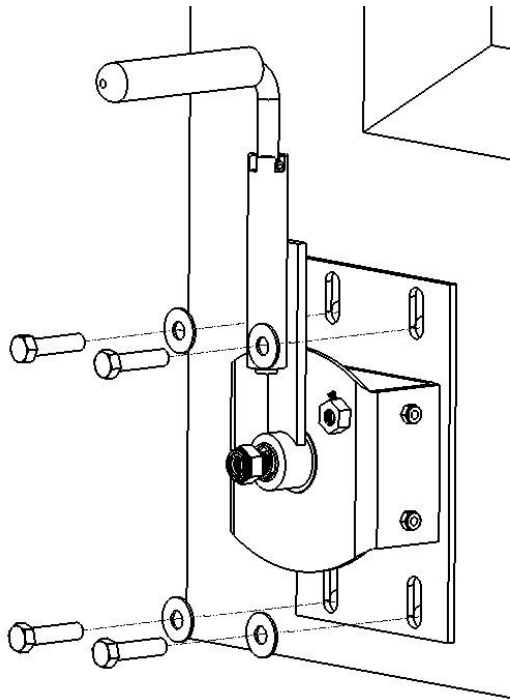


Figure 2.2

#### NOTICE

Use the 3/8" washers regardless of which option is chosen.

Use hex nuts to secure bolts wherever possible.

### Step 3: Installing the Chain

Hang the chain from the sprocket shaft. Feed the chain into the crank box so that it wraps around the crank box gear. Connect the chain to itself with the supplied master link. If the chain is loose, loosen the bolts securing the crank box to the dump box and slide the crank box down until the chain is tight.

#### NOTICE

If the chain is still loose after adjusting the crank box it may be necessary to cut the chain to a more appropriate length.