

CAB LEVEL MANUAL CRANK

INSTALLATION INSTRUCTION MANUAL




Table of Contents


SAFETY.....	3
STEP 1: INSTALLING THE TARP SPOOL MOUNTING BRACKETS	4
INSTALLING THE OPTIONAL LOCKING RATCHET	5
INSTALLING THE OPTIONAL WIND DEFLECTOR AND ITS CORRESPONDING MOUNTING BRACKET	6
STEP 2: INSTALLING THE TARP AXLE	7
STEP 3: ATTACHING THE TARPAULIN.....	8
STEP 4: INSTALLING THE PULL ROPE	9
ATTACHING THE J-HOOKS	9
STEP 5: INSTALLING THE OPTIONAL PULL BAR AND TAILGATE LATCHES	10
INSTALLING THE PULL BAR	10
INSTALLING THE TAILGATE LATCHES	11


SATETY

Read this section carefully before proceeding. The following symbols may appear prior to certain safety related assembly and installation steps described in this manual.

FAILURE TO OPERATE AND INSTALL THIS UNIT AS INSTRUCTED MAY RESULT IN SERIOUS INJURY OR DEATH.

 DANGER
Indicates an immediately hazardous situation which, if not avoided, will result in serious injury or death.

 WARNING
Indicates a potentially hazardous situation which, if not avoided, could result in serious injury or death.

 CAUTION
Indicates a potentially hazardous situation which, if not avoided, may result in minor or moderate injury or property damage.

NOTICE
Indicates information about a subject that is not safety related.

Step 1: Installing the Tarp Spool Mounting Brackets

US Tarp's Cab Level Manual Crank systems come with two tarp spool mounting brackets (1). To install the mounting brackets, position them so that they are as close to the front of the trailer (2) as possible on the exterior of the trailer. Mark the position of the bottom two mounting bracket holes such that they are 1-3/4" down from the top edge of the trailer's walls. Using a 3/8" drill bit, drill holes into the trailer at the marked locations for your mounting bracket. Attach the mounting brackets to the trailer using the supplied 3/8" hex bolts and Nylock nuts (3). (Figure 1.1)

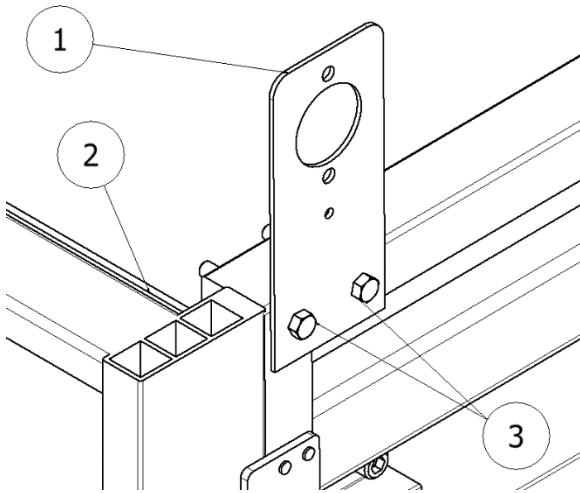


Figure 1.1

Install the supplied Axle Bearing (4) to the outside of the Tarp Spool Mounting Bracket (1) for both sides. Use the 5/16" x 3/4" hex bolts and Nylock nuts (5) to secure the bearing. (Figure 1.2)

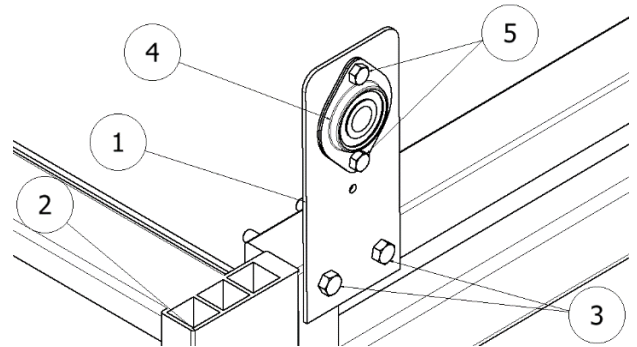


Figure 1.2

Installing the Optional Locking Ratchet

The locking ratchet typically comes preassembled in “-R” upgraded systems, but if it is not assembled, using a 1/4” x 1” hex bolt (1), 1/4” plastic washer (2), and 1/4” hex nut, secure the locking handle (5) to the mounting bracket just under the bearing (4). Connect the spring (6) to the flange hole (7) on the locking handle and the 5/16” x 1-1/2” hex bolt (8) coming through the bottom of the bearing. Be sure to sandwich the spring between the 5/16” hex nuts (9). The hex nuts on either side of the spring to not need to be tightened to each other. It is preferred that you leave the outermost hex nut on the very end of the bolt on just far enough for the Nylock to engage. (Figure 1.3)

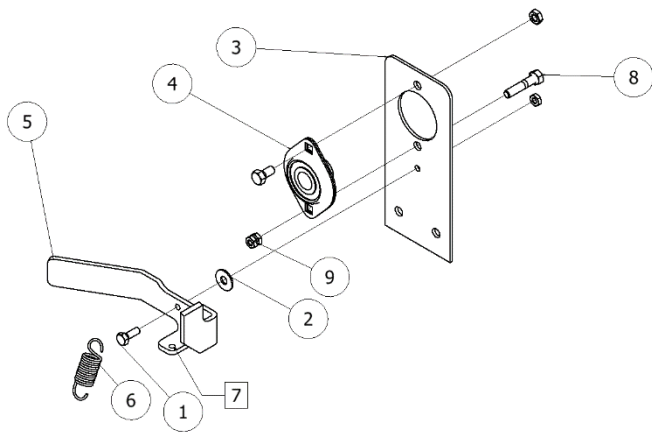


Figure 1.3

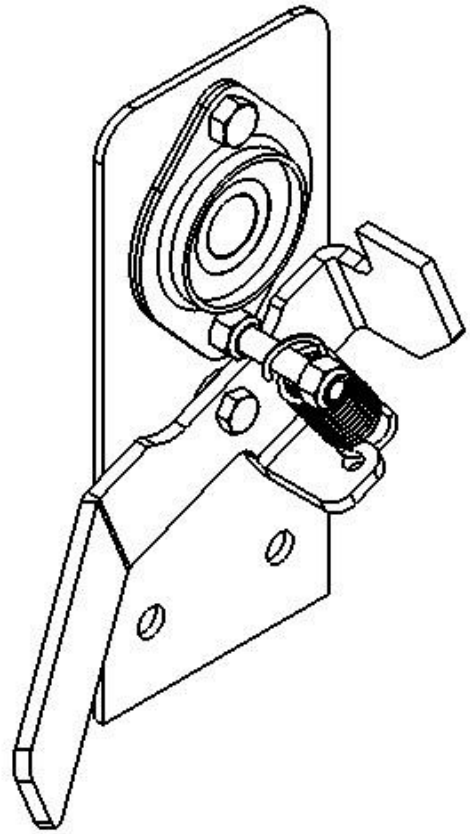


Figure 1.4

Installing the Optional Wind Deflector and its Corresponding Mounting Bracket

Mount the two supplied tarp spool mounting brackets (2) as far forward as possible on the exterior of the trailer. Drill the two mounting holes 1" down from the top edge of the box. Use the supplied 1/2" x 1" bolts (1) and 1/2" nuts to attach the tarp spool mounting brackets. (Figure 1.5)

NOTICE
The rubber bumpers should face toward the rear of the truck

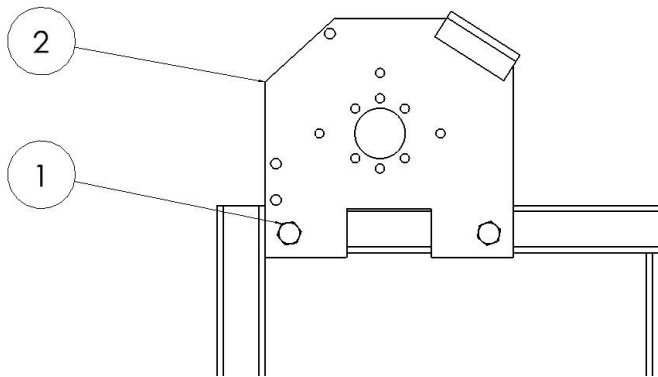


Figure 1.5

Measure the distance between the two, tarp spool mounting brackets (Figure 1.6). Verify that the wind deflector is the same length. If the wind deflector is too long, cut it to the correct length. Attach the wind deflector (1) to the tarp spool mounting brackets using the supplied 5/16" x 1-1/4" thread-cutting bolts (2). (Figure 1.7)

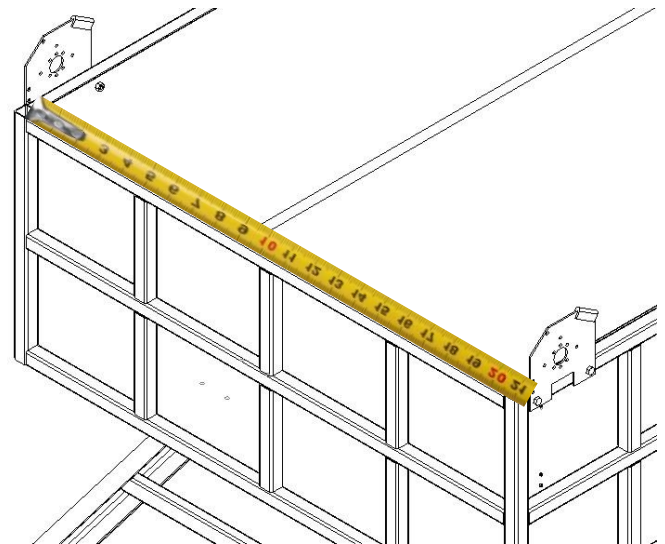


Figure 1.6

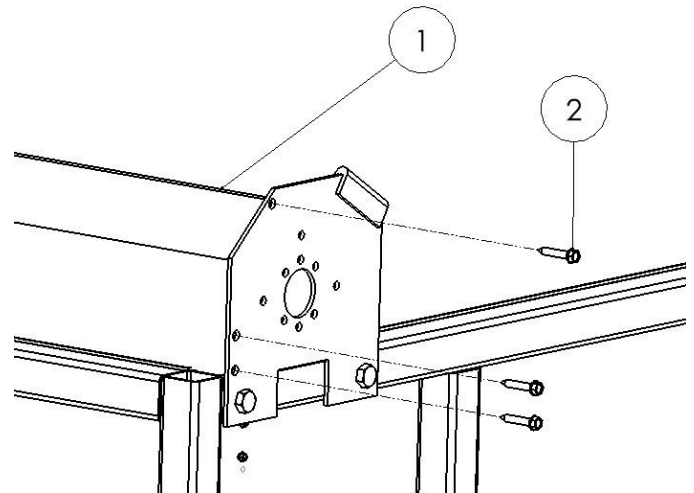


Figure 1.7

Step 2: Installing the Tarp Axle

Measure the distance between the tarp spool mounting brackets. The tarp axle should be 2" shorter than this width.

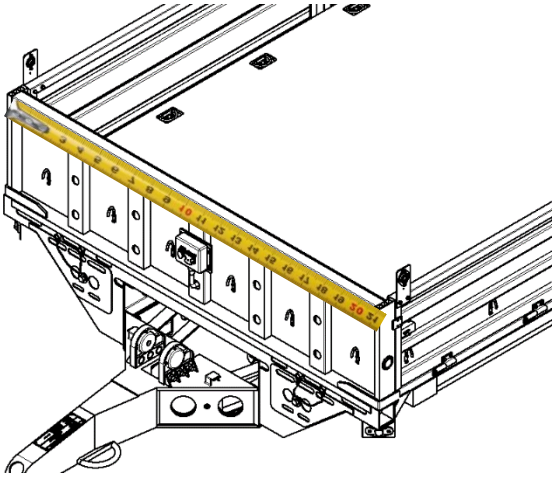


Figure 2.1

If the tarp axle is too long, cut it and drill the 5/16" holes 1/2" (1) from the ends. (Figure 2.2)

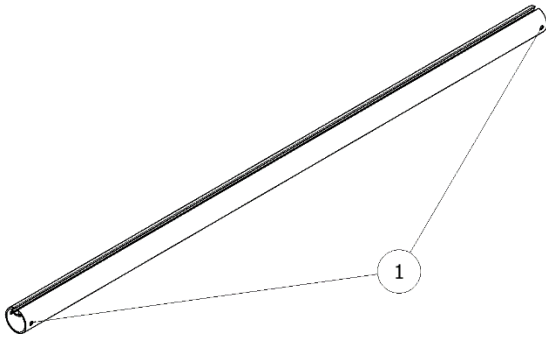


Figure 2.2

Slide the five, 1/4" carriage bolts (3) into the tarp axle slot. Slide the two plastic tarp axle caps (2) into both ends of the tarp axle (1). (Figure 2.3)

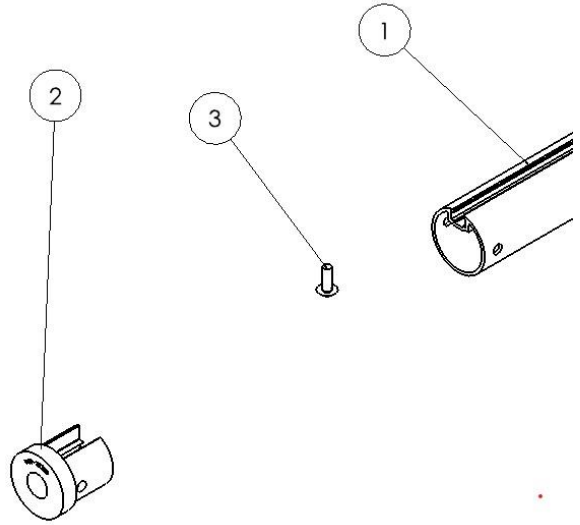


Figure 2.3

On the passenger side, feed the 5" spool shaft (2) through the bearing (1) attached to the mounting bracket. Fit the tarp axle (4) over the spool shaft. Line the tarp axle hole (5) up with the spool shaft hole (3). Secure the tarp axle to the spool shaft using the 5/16" x 2-1/4" hex bolt and hex nut (6). (Figure 2.4)

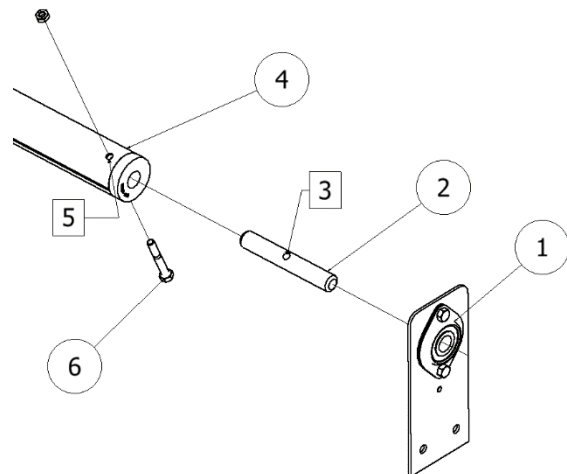


Figure 2.4

On the driver's side, slide the handle shaft (1) through the mounting bracket (3) and slide the tarp axle (4) onto the shaft. Line up the tarp axle hole (6) with the handle shaft hole (2). Secure the tarp axle to the handle shaft using a 5/16" x 2-1/4" hex bolt and hex nut (5). (Figure 2.5)

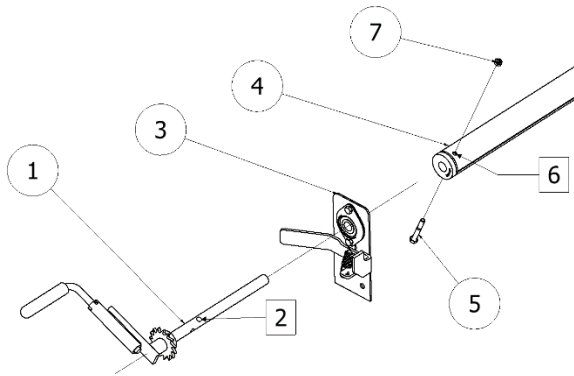


Figure 2.5

Center the tarp axle by manually sliding it side to side. Once it is positioned correctly, tighten the set screws on both bearings using a 1/8" Allen wrench.

Step 3: Attaching the Tarpaulin

Bring the front end of the tarp to the tarp axle. Tarps with grommets can be placed over the carriage bolts. Secure the tarp to the axle by placing the supplied 1/4" fender washers and Nylock nuts onto the outside of the tarp and tightening them to the axle.

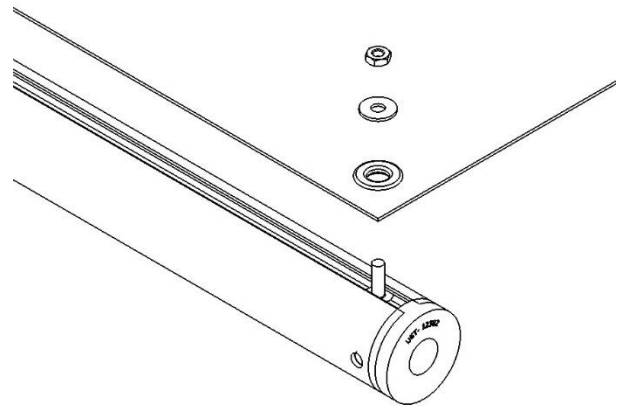


Figure 3.1

Step 4: Installing the Pull Rope

Feed the end of the supplied rope that is not attached to the bungee and rings through the center grommet on the tarp. Tie the rope so that it is secure.

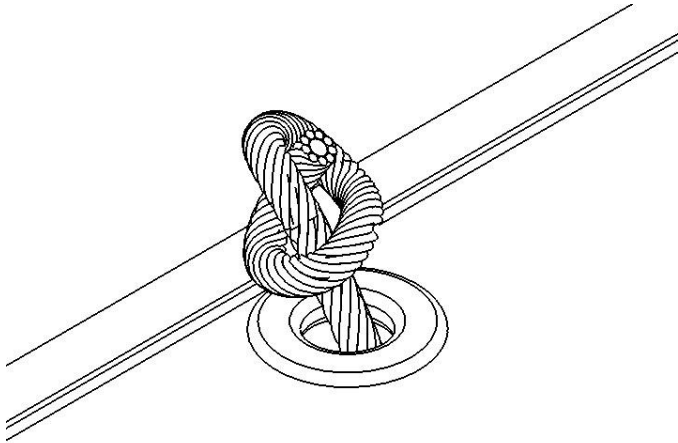


Figure 4.1

NOTICE

Do not use the bungee to connect the rope to the tarp.

Attaching the J-Hooks

On the front driver side of the trailer (Figure 4.2) and on the center of the tailgate of the trailer (Figure 4.3), mount the J-hooks vertically using two #12 x 1" self-drilling screws. The J-hooks are used for securing the pull rope during transport. Wrap the pull rope around the J-hooks and secure the rope using the bungee and rings.

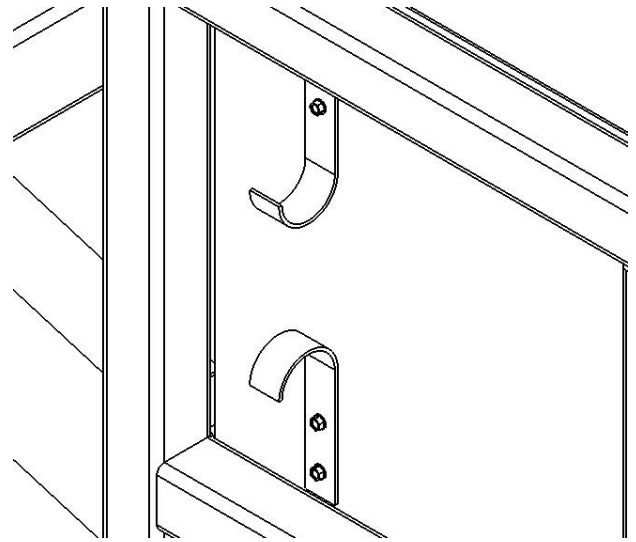


Figure 4.2

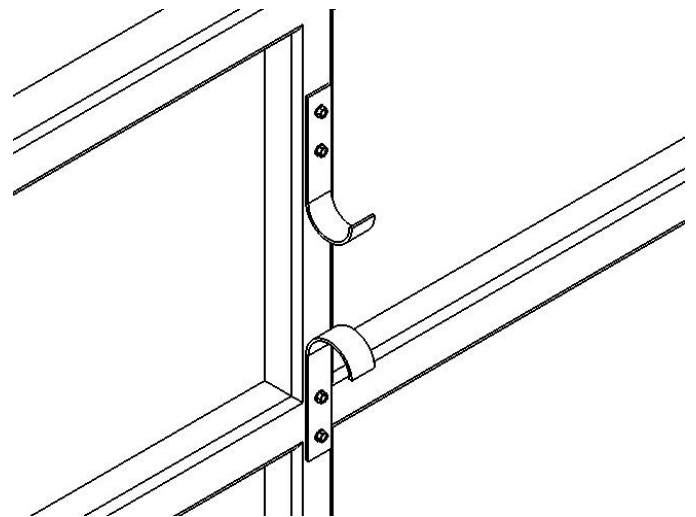


Figure 4.3

Step 5: Installing the Optional Pull Bar and Tailgate Latches

Installing the Pull Bar

Measure the pull bar and verify that it is 12" longer than the width of the tarp. If it is too long cut it to size. On one end of the rear pull bar (1), slide on the 6" plastic handle (2). On the same end, line up the mounting hole on the tarp guide (3) with the slot on the pull bar and secure it with an M10x1.5x25mm hex bolt (4). (Figure 5.1)

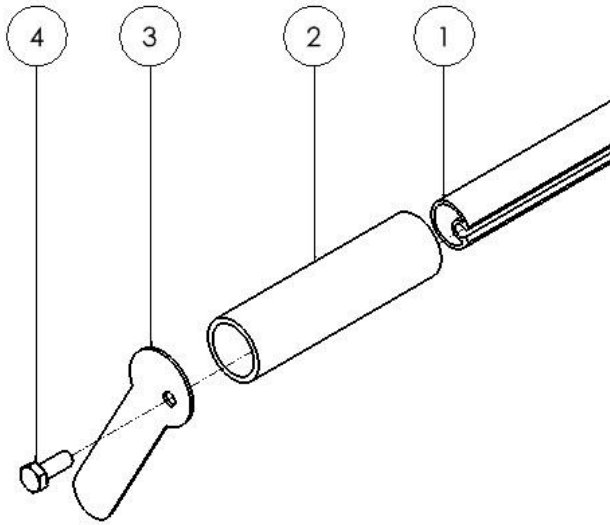


Figure 5.1

If your tarp has a splined end, feed the spline through the slot on the pull bar from the open end (Figure 5.2). Otherwise, if your tarp has a pocket on it, feed the pull bar through tarp pocket (Figure 5.3).

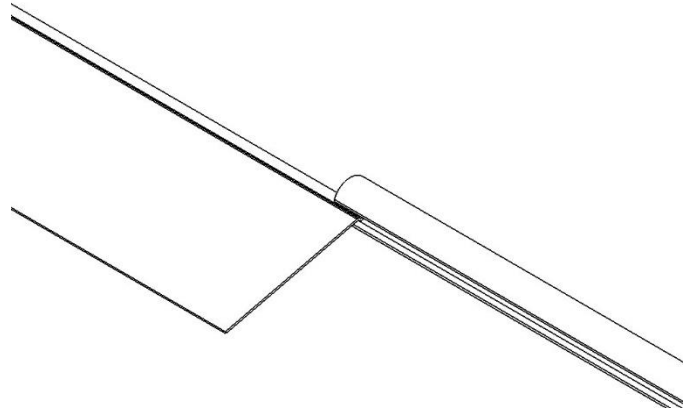


Figure 5.2

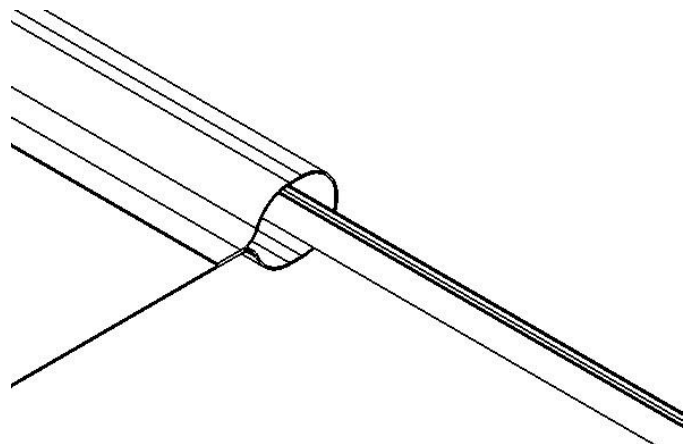


Figure 5.3

On the open end place the 6" plastic handle and tarp guide and secure them with the M10x1.5x25mm bolt. The pull bar should look like the one shown in Figure 5.4.

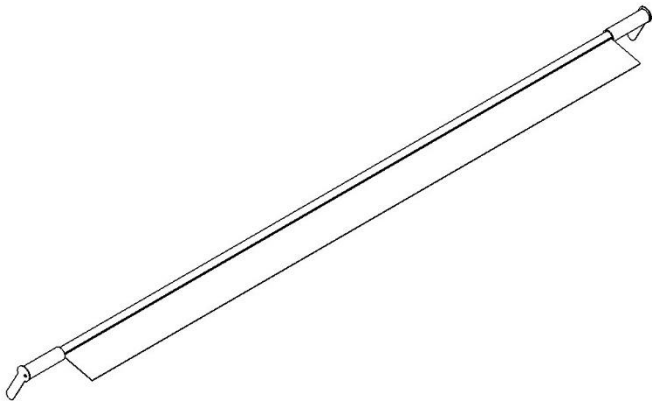


Figure 5.4

Installing the Tailgate Latches

Position the steel tailgate latches so that the hook opening faces the rear of the trailer. Move the tailgate latch as close to the rear as possible on the trailer to maximize tarp coverage. Also make sure to make the bottom of the hook opening as flush as possible with the top edge of the trailer. Mark the position of the mounting holes on the trailer. Using a 1/2" drill bit, drill out the mounting holes. Secure the tailgate latches to the trailer using the 1/2"-13 x 1-1/2" grade 5 zinc carriage bolt, 1/2" zinc plated SAE flat washer, and 1/2"-13 Nylock nut. See Figure 5.5 for an example of how the tailgate latches should be mounted.

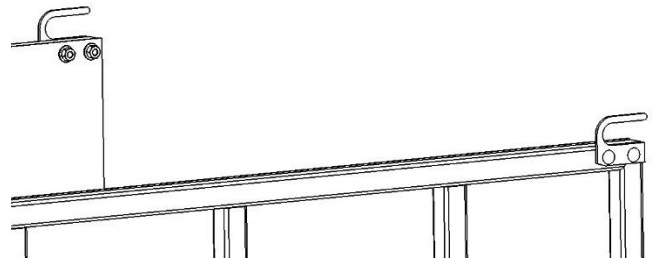


Figure 5.5