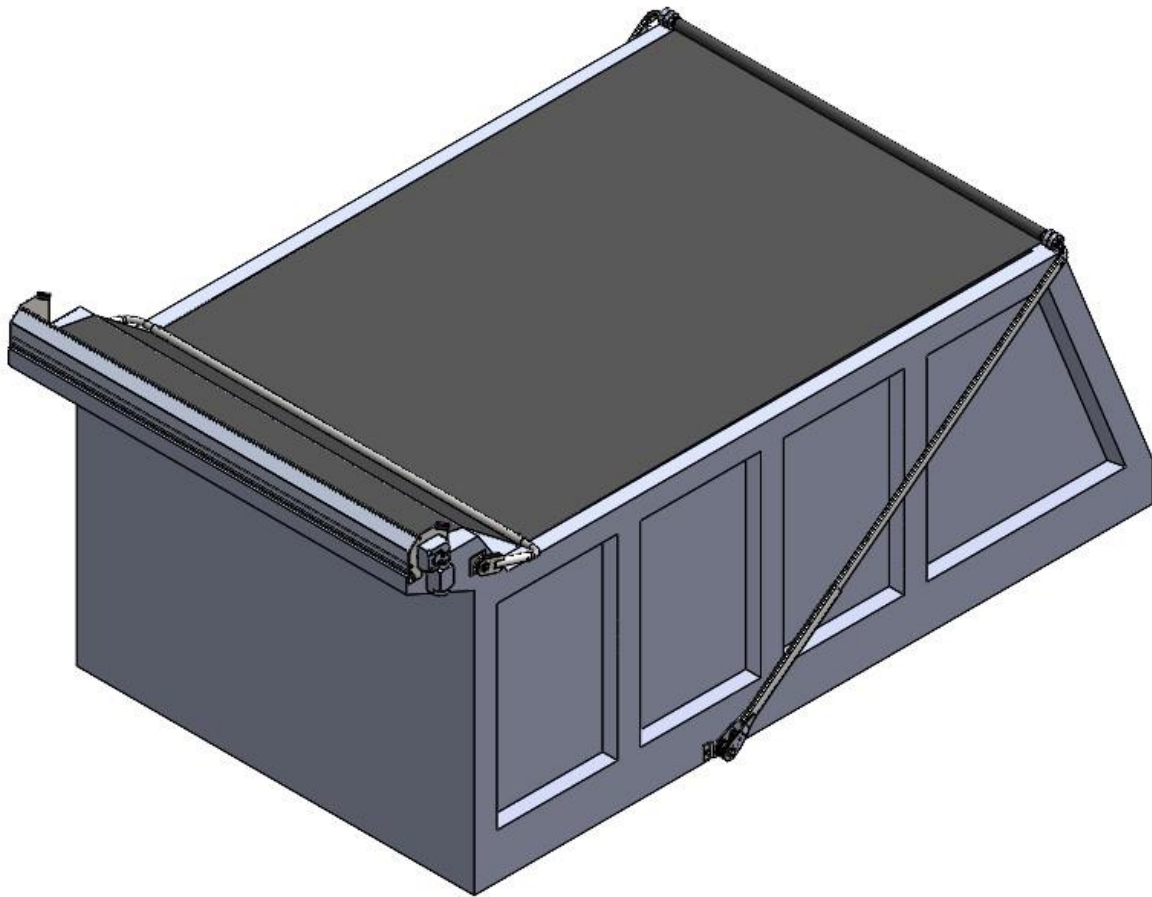


# Tension Hoop

## INSTALLATION INSTRUCTION MANUAL




# Table of Contents


SAFETY.....	3
STEP 1: MOUNTING THE PIVOT ARM .....	4
DRILLING CORNER MOUNTING HOLE .....	4
FINDING THE PIVOT POINT .....	4
POSITIONING THE REMAINING PIVOT .....	5
STEP 2: MOUNTING THE CROSS TUBE .....	5
MOUNTING THE CORNERS .....	5
MEASURING AND INSTALLING THE CROSS TUBE.....	6
STEP 3: FINAL ADJUSTMENTS .....	6
APPENDIX A: PIVOT ASSEMBLY .....	7


## SAFETY

Read this section carefully before proceeding. The following symbols may appear prior to certain safety related assembly and installation steps described in this manual.

FAILURE TO OPERATE AND INSTALL THIS UNIT AS INSTRUCTED MAY RESULT IN SERIOUS INJURY OR DEATH.

 <b>DANGER</b>
Indicates an immediately hazardous situation which, if not avoided, will result in serious injury or death.

 <b>WARNING</b>
Indicates a potentially hazardous situation which, if not avoided, could result in serious injury or death.

 <b>CAUTION</b>
Indicates a potentially hazardous situation which, if not avoided, may result in minor or moderate injury or property damage.

<b>NOTICE</b>
Indicates information about a subject that is not safety related.

## Step 1: Mounting the Pivot Arm

### Drilling Corner Mounting Hole

Measure and mark 1" from the free end of the tension hoop pivot arm. Using a 4/32" drill bit, drill a hole through the pivot arm at the mark. Drill these mounting holes on both arms. These holes will be used later for mounting the tension hoop pivot arm to the tension hoop corner.

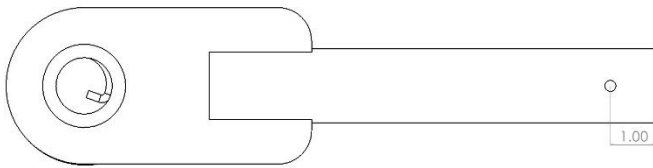


Figure 1.1

### Finding the Pivot Point

To find the pivot point, measure from the point where the cab shield meets the tarp spool mounting bracket to point where the cab shield meets the dump box. Mark the midpoint of this measurement, this is approximately where the center of the pivot needs to be. If this positioning causes the weldment plate to not sit fully on the cab shield, adjust the mark horizontally until correct.

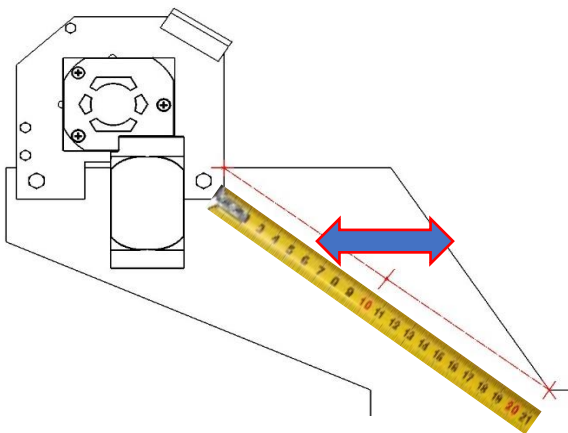


Figure 1.2

Once you have found a pivot point that works, place a tension hoop elbow (1) into the pivot assembly (2) and clamp the assembly to the cab shield so the center of the pivot lines up with the mark. Swing the corner from its resting position on the dump box to its resting position on the tarp spool mounting bracket.

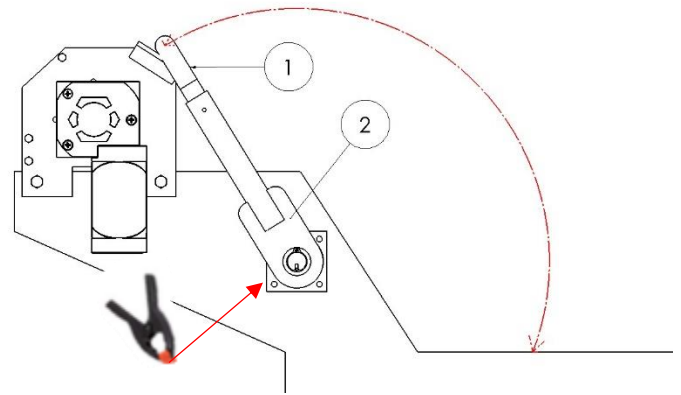


Figure 1.3

### NOTICE

Make sure the arm lands on the rubber stopper on the tarp spool mounting bracket

### NOTICE

Depending on cab shield height it may be necessary to cut the corner to size

Once you have found the pivot position and checked that the arm swings freely, the pivot can be mounted to the cab shield. The pivot can either be welded directly to the cab shield, or if possible, the mounting holes can be drilled into the cab shield, and the pivot can be mounted using the supplied 3/8" hex bolts, nylock nuts and washers.

## Positioning the Remaining Pivot

Measure and record the distance from the front of the cab shield to the pivot center and from the top of the cab shield to the pivot center for the mounted pivot assembly. On the side that does not have the pivot mounted, use the measurements to mark the pivot center.

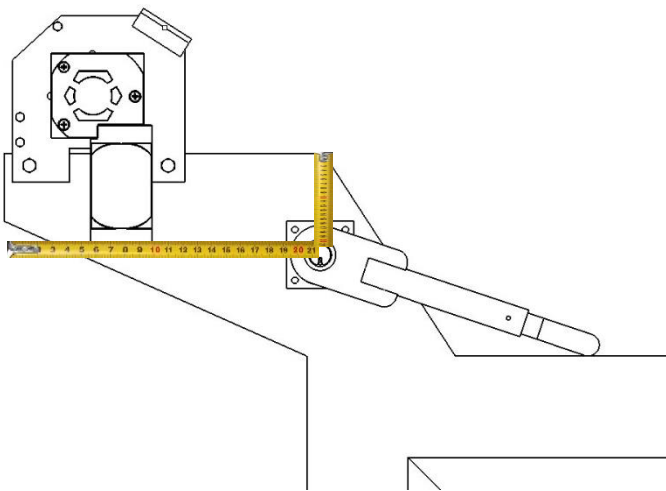


Figure 1.4

Mount the pivot by welding or using the supplied 3/8" hex bolts, nylock nuts and washers.

## Step 2: Mounting the Cross Tube

### Mounting the Corners

Insert the corners into the pivot arm and swing the arm so that the corner rests in the desired location on the tarp spool mounting bracket. Mark the mounting hole on the tension hoop corner. Remove the corner and drill the mounting hole using a 4/32" drill bit.

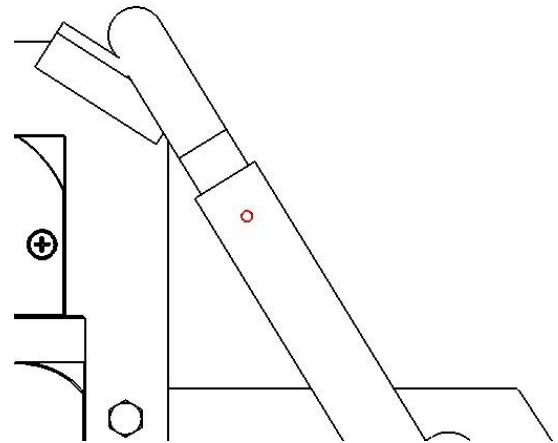


Figure 2.1

Mount the corners (1) to the pivot arms (2) using the supplied 1/4" hex bolts (3) and nylock nuts (4).

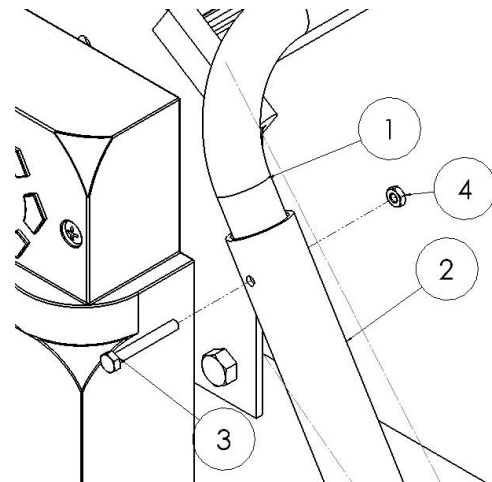


Figure 2.2

## Measuring and Installing the Cross Tube

To get the required cross tube length, while the pivot arms are in a resting position, measure the distance between the inside ends of the tension hoop corners. Add 8 inches to this measurement to get the required cross tube length. Mark and cut the cross tube.

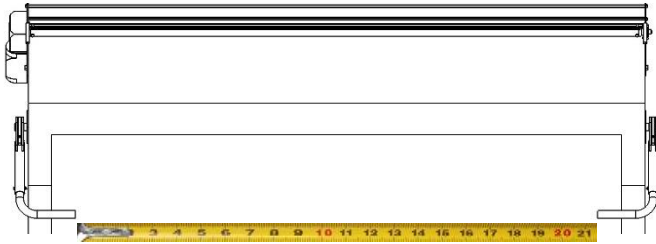


Figure 2.3

Remove the tension hoop corners from the pivot arms. Insert the ends of the corners into the ends of the cross tube. Finally reconnect the tension hoop corners to the pivot arms.



Figure 2.4

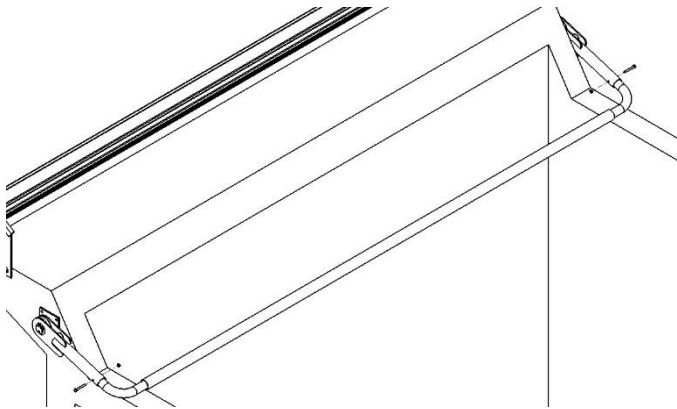


Figure 2.5

## Step 3: Final Adjustments

Wind in the tarp all the way so that the system rests on the tarp axle assembly. Make sure that the tarp bow is not binding with the tension hoop. The system should look like Figure 3.1.

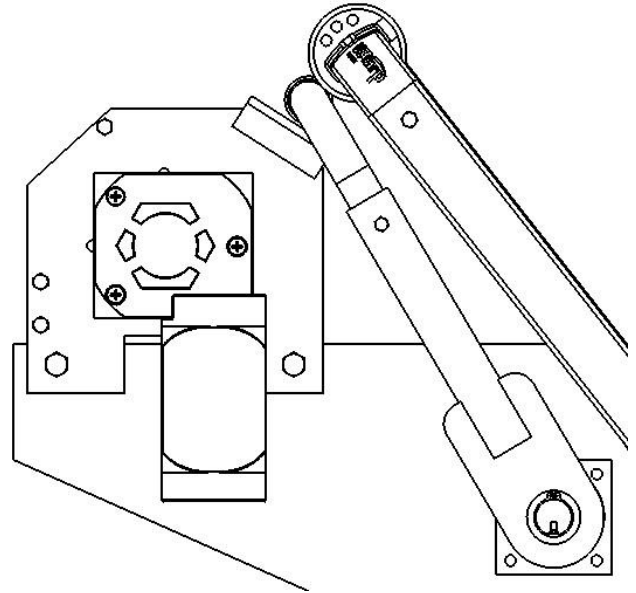
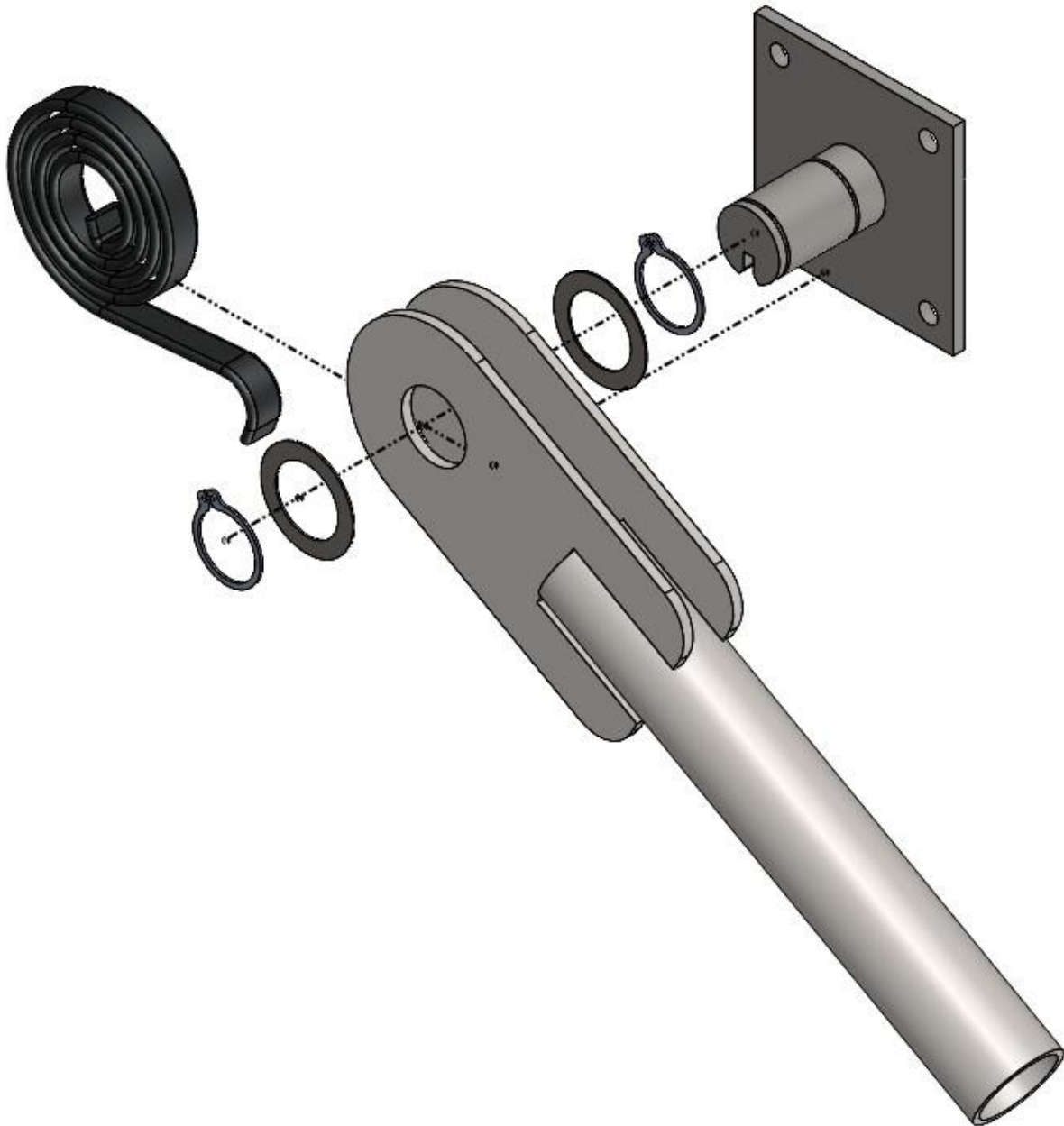


Figure 3.1

Uncover and cover the load a few times to make sure that everything is working properly, and the tension hoop is falling into the proper positions on the dump box and tarp axle assembly. Correct as necessary.

## Appendix A: Pivot Assembly



**Note:** The spring should be oriented so that tension is applied when the pivot is rotated upwards towards the tarp spool assembly. The spring leg should be inserted into the arm tube.