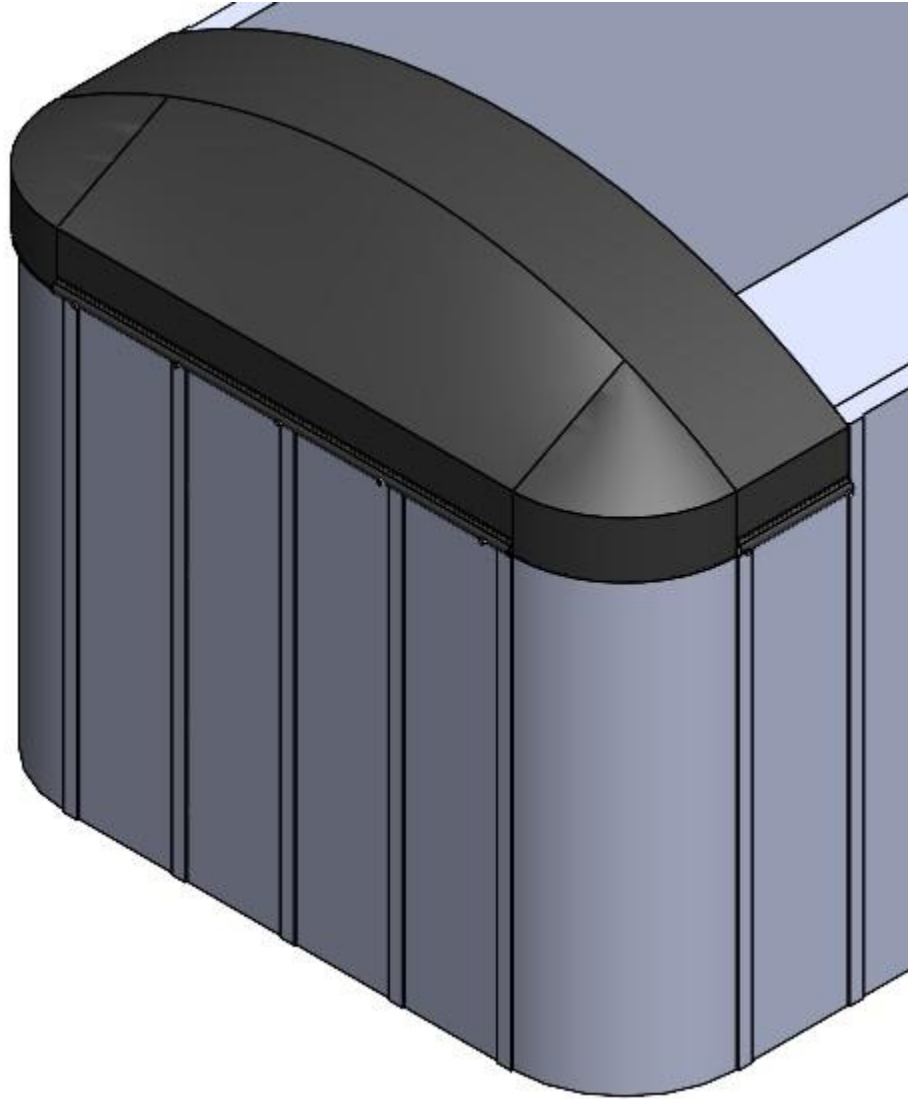


# Fabric Ag End Cap

INSTALLATION INSTRUCTION MANUAL



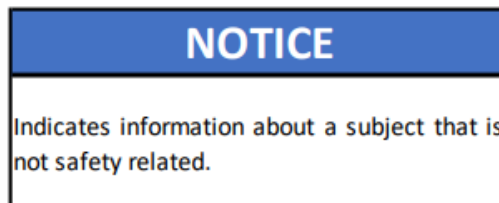
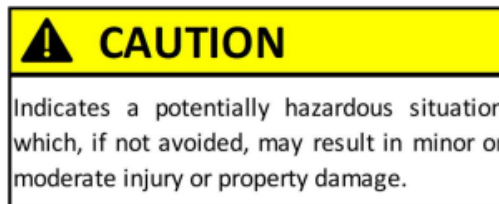
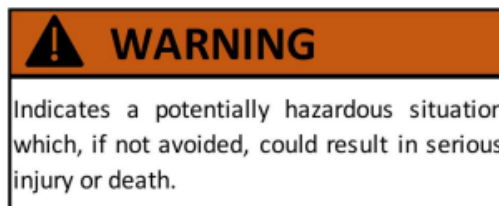
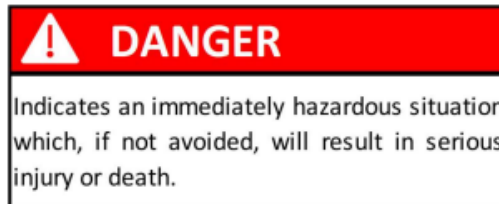
# Table of Contents

SAFETY.....	3
STEP 1: INSTALLING THE BOW BRACKETS .....	4
STEP 2: INSTALLING THE BOWS .....	5
STEP 3: INSTALLING THE FLAT BARS & TENSIONING END CAP .....	6

# SAFETY

Read this section carefully before proceeding. The following symbols may appear prior to certain safety related assembly and installation steps described in this manual.

FAILURE TO OPERATE AND INSTALL THIS UNIT AS INSTRUCTED MAY RESULT IN SERIOUS INJURY OR DEATH.



## Step 1: Installing the Bow Brackets

Measuring from the front of the box, mark the cap depth, 30" on both top rails, or measure the depth of your cap designated on the cap tag minus 2" if you are using a custom end cap.

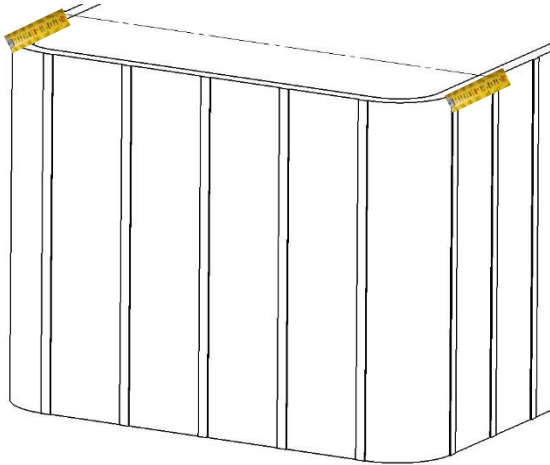


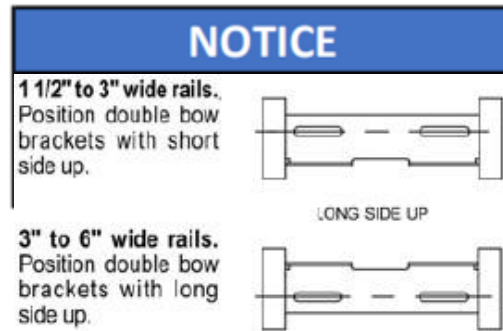
Figure 1.1

Determine the height the bow bracket should be mounted at using Table 1.1 given your trailers bow rise, rail width and trailer width.

Rail	High Rise 12"		Low Rise 8"	
	96"	102"	96"	102"
1"	3-3/16	3-1/4	3-9/16	3-5/8
2"	2-11/16	2-3/4	3-1/4	3-5/16
3"	2-3/16	2-5/16	2-15/16	3
4"	1-7/8	2	2-3/4	2-13/16
5"	1-3/8	1-9/16	2-7/16	2-9/16
6"	7/8	1-1/16	2-1/8	2-1/4

Table 1.1

Using the distance determined from Table 1.1 mark this depth on your trailer's interior walls just below the mark made for cap depth.



Place the bottom of the bracket on the depth mark and align the rear edge of the bracket with the spacing mark.

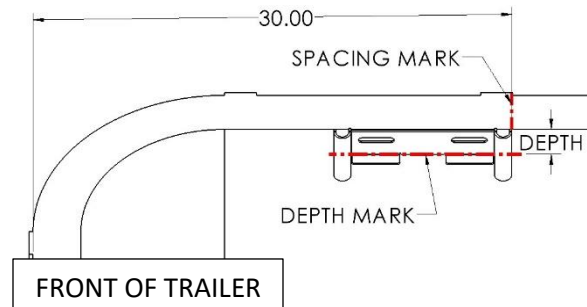


Figure 1.2



1-(800) 249-0297  
 technicalsupport@ustarp.com  
 www.ustarp.com

Now, mark the rear most portion of the bracket mounting slots. Drill out the mounting holes using an 11/32" drill bit and mount the brackets using the supplied 3/8 x 1-1/2" self-tapping hex bolts. Do not fully tighten the bolts as the bracket position will need to be adjusted in later steps.

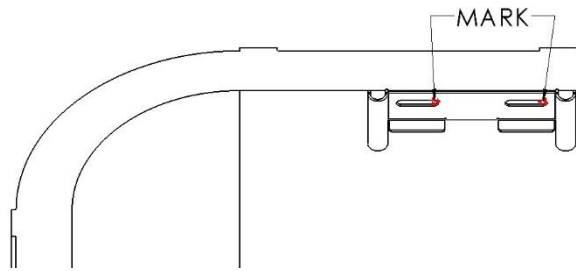


Figure 1.3

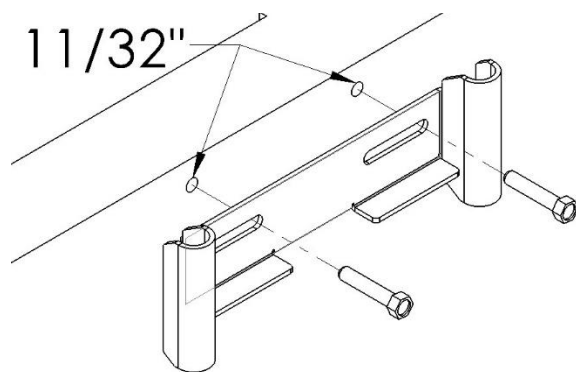


Figure 1.4

## Step 2: Installing the Bows

Insert the welded bows and shanks into the mounting bracket.

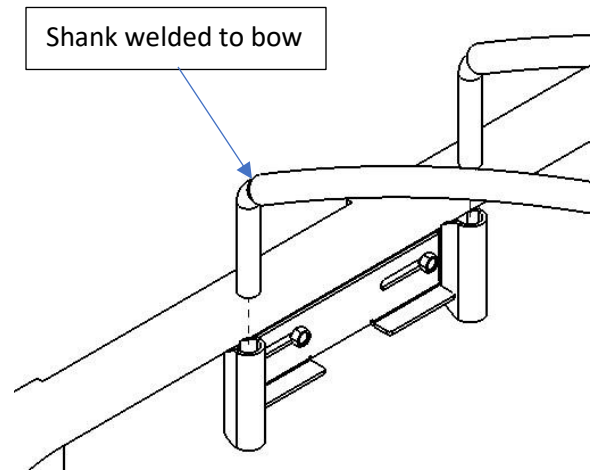


Figure 2.1

Place the loose bow shank into the bracket on the opposite side of the box. Align the bow with the loose bow shank and mark the bow as shown in Figure 2.2

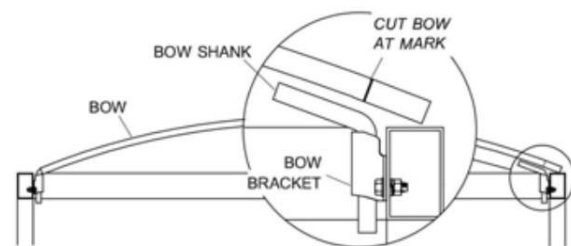


Figure 2.2

Remove the bow. Cut the bow at the mark and grind the end until smooth.

Slide both bows through the double bow pocket on the fabric end cap.

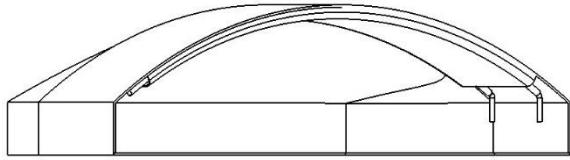


Figure 2.3

Place the loose bow shanks into the ends of the bows then insert the bows and shanks into the bow brackets.

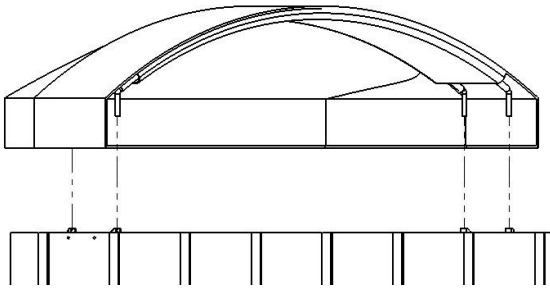


Figure 2.4

### Step 3: Installing the Flat Bar & Tensioning End Cap

Slide the flat bars into the pockets along the bottom edges of the end caps. It may be necessary to cut the flat bars to length

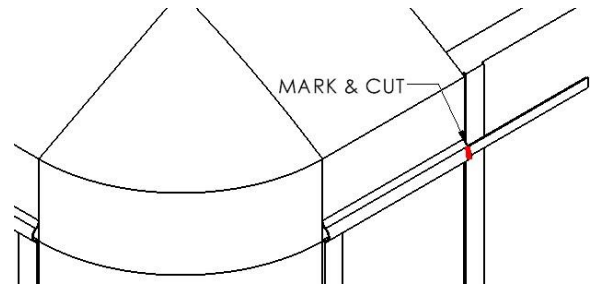


Figure 3.1

Once all three flat bars are the proper length and inserted into the pockets, pull the long edge of the end cap taught. Secure this tarp edge, through the flat bar, to the trailer using the supplied 3/8" X 1-1/2" self-tapping screws.

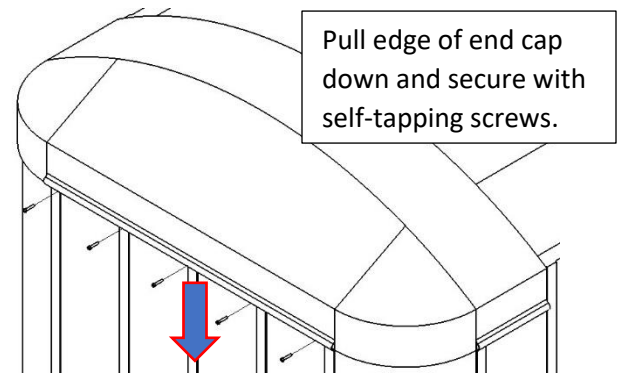


Figure 3.2

Pull the double bow brackets away from the mounted edge of the end cap to tighten the end cap then tighten down the double bow brackets to hold this tension.

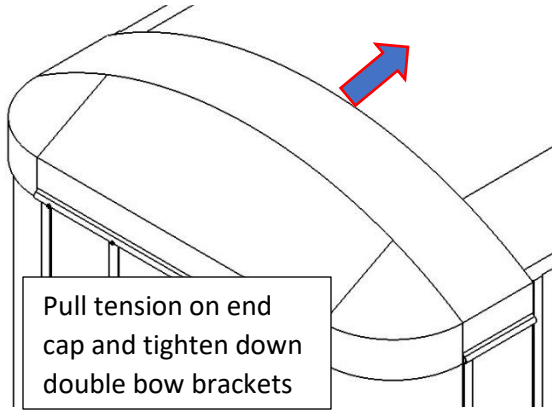


Figure 3.3

Now pull each short edge of the end cap down to make them taut and secure them with the supplied 3/8" X 1-1/2" self-tapping screws.

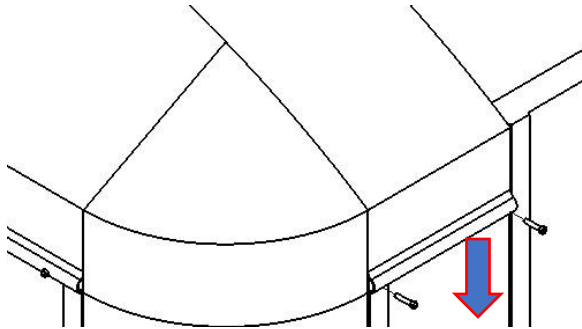


Figure 3.4

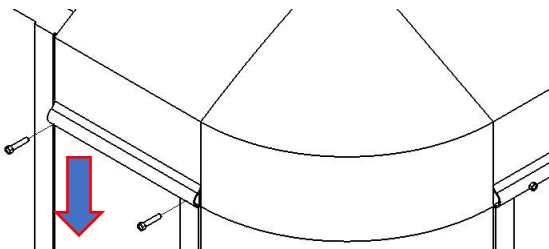


Figure 3.5



1-(800) 249-0297  
technicalsupport@ustarp.com  
www.ustarp.com