

**SEVERE DUTY
& RECYCLING
TARP SYSTEMS**

Applications

- Recycling
- Refuse
- Scrap Hauling
- Storm Clean-Up



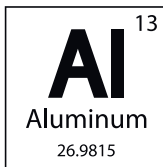


- 4** | Severe Duty Systems
Severe Duty Spring Assemblies
Severe Duty Arm Kits
Severe Duty Arm Hold Down Kits
- 5** | 102" Scrap Hauler Assembly
96" Scrap Hauler Assembly
- 6** | Severe Duty One Piece System
- 7** | Severe Duty Two Piece System



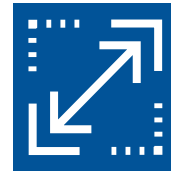


US Tarp's Severe Duty & Recycling line is specifically designed to meet the demanding requirements of heavy-duty applications such as scrap hauling and storm clean-up. These products are engineered for durability, strength, and ease of use .



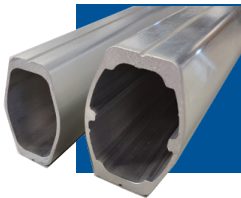
Aluminum Construction

Severe duty systems are constructed with non-corrosive aluminum, strong but light-weight for over the road load containment.



Length Rating

Rated for trailer lengths up to **54'**



Engineered For Durability

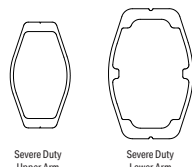
US Tarp Severe Duty arm profiles are engineered and field tested for durability, with two options: Severe Duty Two-Piece and Severe Duty One-Piece for extreme service.



Applications

- Storm Clean-Up
- Refuse Transfer

Severe Duty Aluminum Two-Piece Arm Profile



Severe Duty Upper Arm

Severe Duty Lower Arm

Severe Duty Aluminum One-Piece Arm Profile

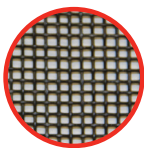


Equipment

- Open Top Trailers
- Gondola Trailers
- End Dump Trailer

Heavy Duty Tarps

We've got you covered with tarps ideally suited for Severe Duty cargo containment applications.



BLACK MESH MULTI-COLOR MESH

The industry standard cargo control mesh. Medium weight, PVC-coated polyester recommended for rock, sand, gravel, and brush.



MONSTER MESH

Heavy-weight, tightly woven mesh with 50% more threads than our HD. PVC-coated polyester. Perfect for refuse and storm clean-up applications.

Motors

Power & reliability, backed by 40 Month Warranty.



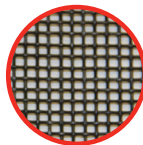
| PART # | RATED TO: | DESCRIPTION |
|---------------------------------------|-----------|---|
| SEVERE DUTY SYSTEMS* | | |
| 16518* | 40' | 12-Spring Severe Duty System with Two-Piece Arms and 16' Uppers |
| 16502* | 48' | 16-Spring Severe Duty System with Two-Piece Arms and 16' Uppers |
| 16517* | 45' | 16-Spring Severe Duty System with 24' Severe Duty One-Piece Arms |
| 16516* | 54' | 16-Spring Severe Duty System with Two-Piece Arms and 22' Uppers |
| SEVERE DUTY SPRING ASSEMBLIES | | |
| 16473 | 40' | 12-Spring Underbody Assembly for Two-Piece Arm; Driver Side |
| 16474 | 40' | 12-Spring Underbody Assembly for Two-Piece Arm; Passenger Side |
| 16485-HD | 45' | 16-Spring Underbody Assembly for Severe Duty One-Piece ; Driver Side |
| 16486-HD | 45' | 16-Spring Underbody Assembly for Severe Duty One-Piece; Passenger Side |
| 16469-HD | 54' | 16-Spring HD Underbody Assembly for Two-Piece Arm; Driver Side |
| 16470-HD | 54' | 16-Spring HD Underbody Assembly for Two-Piece Arm; Passenger Side |
| SEVERE DUTY ARM KITS** | | |
| 16476 | 40' | 12-Spring Severe Duty Underbody Arm Kit with Two-Piece Lowers & 16' Uppers |
| 16528 | 48' | 16-Spring Severe Duty Underbody Arm Kit with Two-Piece Lowers & 16' Uppers |
| 16522 | 45' | 16-Spring Severe Duty Underbody Arm Kit with 24' Severe Duty One-Piece Arms |
| 16475 | 54' | 16-Spring Severe Duty Underbody Arm Kit with Two-Piece Lowers & 22' Uppers |
| SEVERE DUTY ARM HOLD DOWN KITS | | |
| 16599 | - | Arm Restraint Kit for Two-Piece Arm Kits with Cable |
| 16505 | - | Arm Strap Kit for Two-Piece Arm Kits with 1" Strapping |
| 16602 | - | Arm Restrain Kit for Severe Duty One-Piece Arm Kits with Cable |
| 16519 | - | Arm Strap Kit for Severe Duty One-Piece Arms with 1" Strapping |

*Assembled Scrap Hauler Housing for 102" Body

**Arm Kits do not include Arm Hold Down Kits

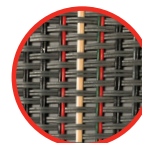
Heavy Duty Tarp Options

We've got you covered with tarps ideally suited for Severe Duty cargo containment applications.



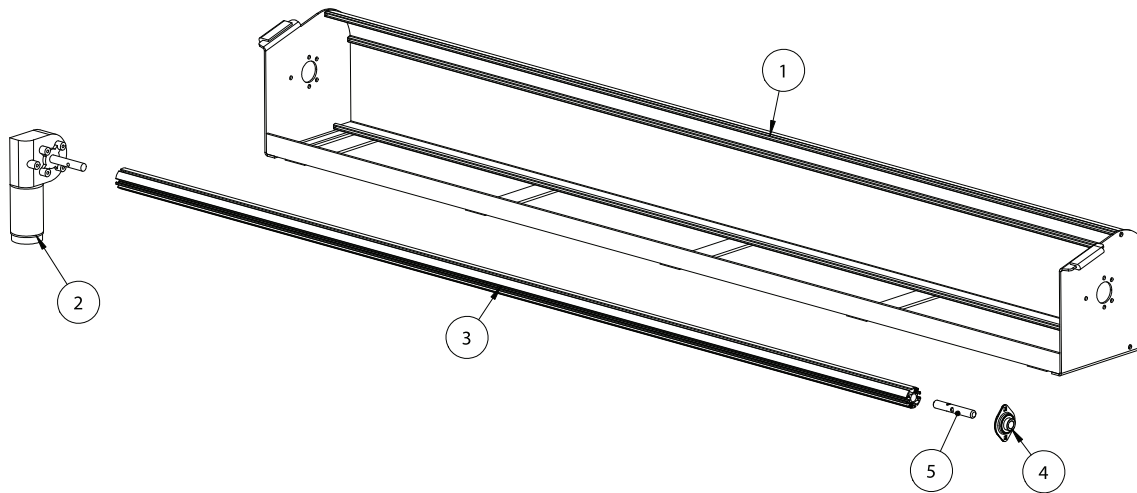
BLACK MESH MULTI-COLOR MESH

The industry standard cargo control mesh. Medium weight, PVC-coated polyester recommended for rock, sand, gravel, and brush.



MONSTER MESH

Heavy-weight, tightly woven mesh with 50% more threads than our HD. PVC-coated polyester. Perfect for refuse and storm clean-up applications.



| REF. | QTY | PART # | DESCRIPTION |
|-----------------------------------|-----|----------|---|
| 102" SCRAP HAULER ASSEMBLY | | | |
| 1 | 1 | 15089 | Scrap Hauler Housing |
| 2 | 1 | 15938 | 90:1 HD Bulletproof Tarp Motor |
| 3 | 1 | 11200 | Tarp Axle, 101-5/8" |
| 4 | 1 | 11139 | 3/4" Stamped Steel Flange Bearing C.D. |
| 5 | 1 | 11201 | Spool Shaft 5" |
| 1-5 | 1 | 16117 | 102" Scraphauler Housing Assembled (Includes Components: 15089,15938,11200,11139,11201) |
| 96" SCRAP HAULER ASSEMBLY | | | |
| 1 | 1 | 15089-96 | Scrap Hauler Housing |
| 2 | 1 | 15938 | 90:1 HD Bulletproof Tarp Motor |
| 3 | 1 | 11385 | Tarp Axle, 95-5/8" |
| 4 | 1 | 11139 | 3/4" Stamped Steel Flange Bearing C.D. |
| 5 | 1 | 11201 | Spool Shaft 5" |
| 1-5 | 1 | 16116 | 96" Scraphauler Housing Assembled (Includes Components: 15089-96,15938,11385,11139,11201) |

**Severe Duty
1-Piece Arm Profile**



Part #14748

**Severe Duty
2-Piece Arm Profile**



**Lower Arm Part# 16560
Upper Arm Part # 16559**

Heavy Duty Axle

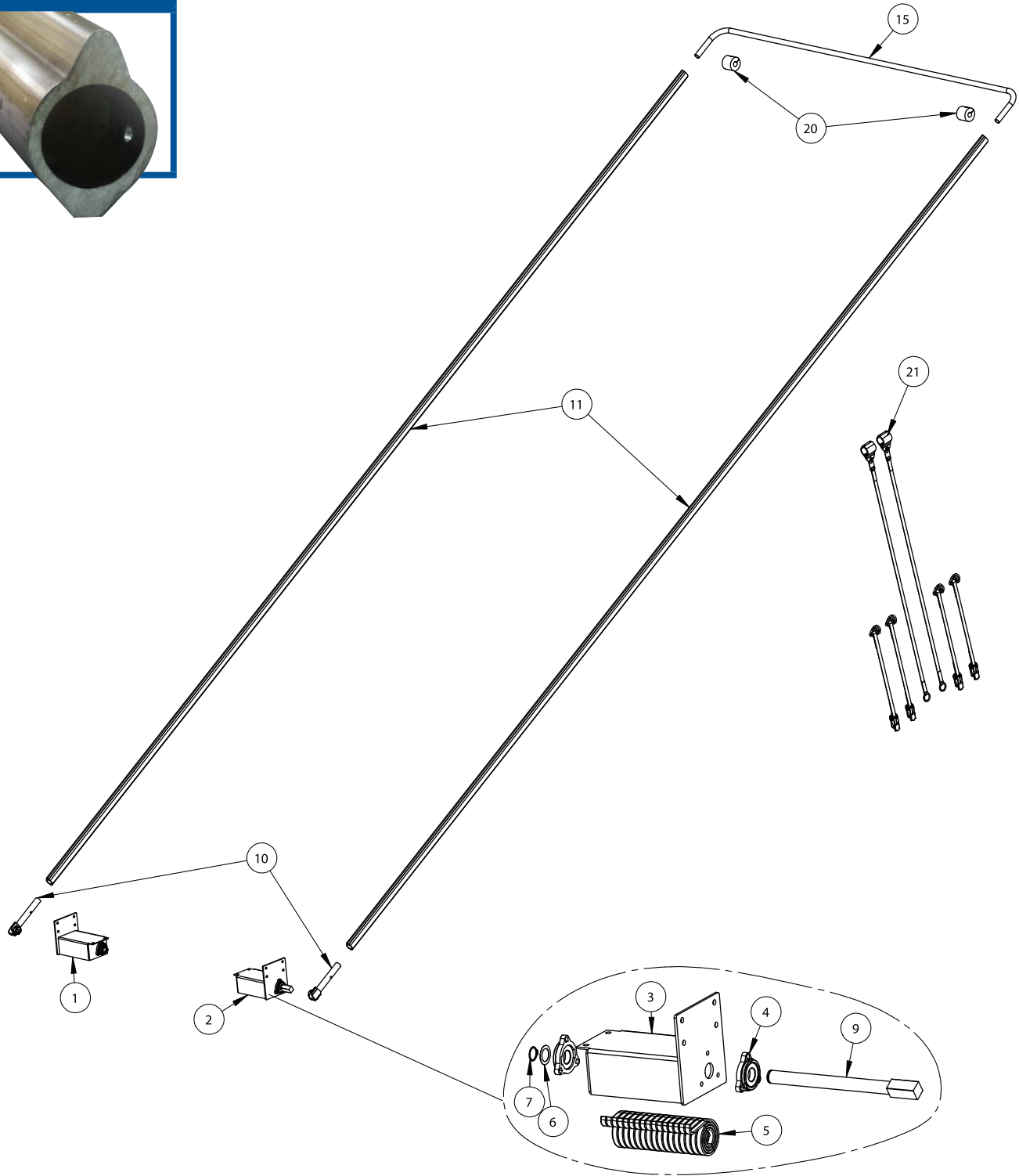


**Part #11200
Part #11385**

**HD Bulletproof
Tarp Motor (90:1)**



Part #15938



| REF. | QTY | PART # | DESCRIPTION |
|------|-----|--------|-------------|
|------|-----|--------|-------------|

SEVERE DUTY 1-PIECE ARM KIT

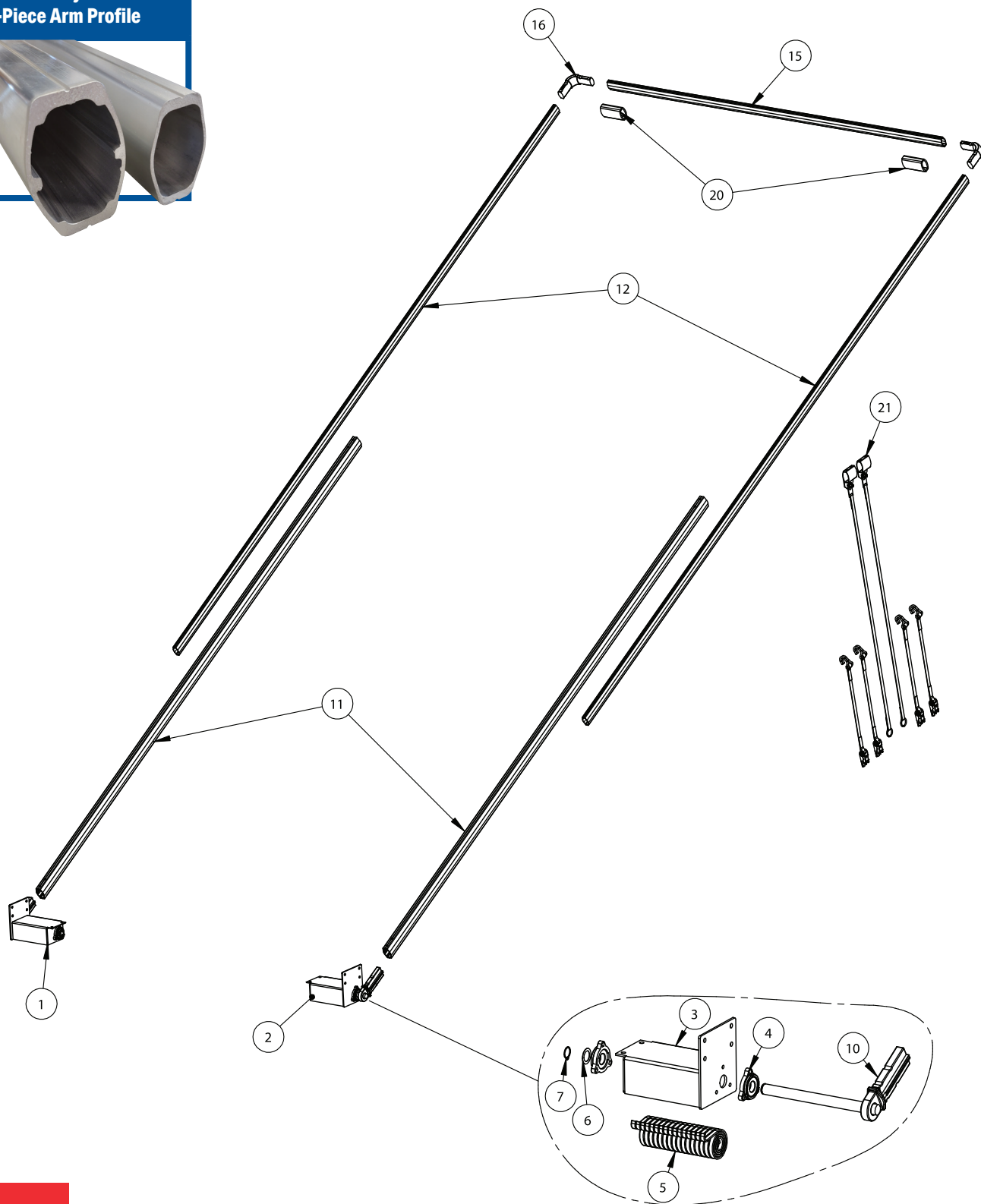
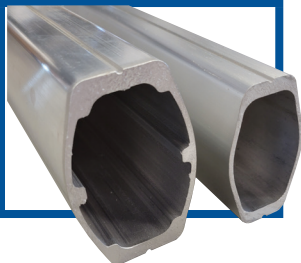
| | | | |
|----|---|----------|---|
| 1 | 1 | 16485-HD | 16-Spring Severe Duty Spring Assembly for 1-Piece Arm; Driver Side |
| 2 | 1 | 16486-HD | 16-Spring Severe Duty Spring Assembly for 1-Piece Arm; Passenger Side |
| 10 | 2 | 15717 | Underbody Severe Duty One-Piece Arm Casting |
| 11 | 2 | 14748* | 24ft Severe Duty One-Piece Arm |
| 15 | 1 | 14522 | Steel 1-Piece Cross Tube for 102" Trailers (108"C.D.) |
| 20 | 2 | 13632 | Black Rubber Bumper for Steel Cross Tube w/Bolt |
| 21 | 1 | 16602 | Arm Restraint Kit for 1-Piece Severe Duty Arm with Cable |
| ** | 2 | 14835 | Open Top Housing Support Brace |

SEVERE DUTY 1-PIECE SPRING ASSEMBLY

| | | | |
|---|----|----------|--|
| 3 | 1 | 16467-HD | 16-Spring Housing; Driver Side |
| 3 | 1 | 16468-HD | 16-Spring Housing; Passenger Side |
| 4 | 2 | 47800 | 1-1/4" 3-Bolt Cast Flange Bearing |
| 5 | 16 | 11121 | Spiral Torsion Spring |
| 6 | 1 | 11141 | Stainless Steel Bushing for Pivot Pin |
| 7 | 1 | 11142 | External Retaining Ring for Pivot Pin |
| 9 | 1 | 16490 | 16-Spring Shaft for 1-Piece Arm; 1-1/4" Sq Connector |

*Overlength
** Not Shown

Severe Duty
2-Piece Arm Profile



| REF. | QTY | PART # | DESCRIPTION |
|------|-----|--------|-------------|
|------|-----|--------|-------------|

SEVERE DUTY 2-PIECE ARM KIT

| | | | |
|----|---|----------|---|
| 1 | 1 | 16473 | 12-Spring Severe Duty Spring Assembly for 2-Piece Arm; Driver Side |
| 1 | 1 | 16469-HD | 16-Spring Severe Duty Spring Assembly for 2-Piece Arm; Driver Side |
| 2 | 1 | 16474 | 12-Spring Severe Duty Spring Assembly for 2-Piece Arm; Passenger Side |
| 2 | 1 | 16470-HD | 16-Spring Severe Duty Spring Assembly for 2-Piece Arm; Passenger Side |
| 11 | 2 | 16561 | 104" Severe Duty Lower Arm |
| 11 | 2 | 16560* | 160" Severe Duty Lower Arm |
| 12 | 2 | 16555* | 192" Severe Duty Lower Arm |
| 12 | 2 | 16559* | 264" Severe Duty Lower Arm |
| 15 | 1 | 16558 | 103" Severe Duty Cross Tube |
| 16 | 2 | 16557 | Severe Duty Upper Corner |
| 20 | 2 | 16556 | Severe Duty Centering Flange |
| 21 | 1 | 16599 | Arm Restraint Kit For Two Piece arm kits with Cable |
| ** | 2 | 14835 | Open Top Support Brace |

SEVERE DUTY 2-PIECE SPRING ASSEMBLY

| | | | |
|----|----------|----------|---|
| 3 | 1 | 16471 | 12-Spring Housing; Driver Side |
| 3 | 1 | 16472 | 12-Spring Housing; Passenger Side |
| 3 | 1 | 16467-HD | 16-Spring Housing HD; Driver Side |
| 3 | 1 | 16468-HD | 16-Spring Housing HD; Passenger Side |
| 4 | 2 | 47800 | 1-1/4" 3-Bolt Cast Flange Bearing |
| 5 | 12 OR 16 | 11121 | Spiral Torsion Spring |
| 6 | 1 | 11141 | Stainless Steel Bushing |
| 7 | 1 | 11142 | External Retaining Ring |
| 10 | 1 | 16562 | 12-Spring Severe Duty Lower Casting for 2-Piece Arm; Driver Side |
| 10 | 1 | 16563 | 12-Spring Severe Duty Lower Casting for 2-Piece Arm; Passenger Side |
| 10 | 1 | 16553 | 16-Spring Severe Duty Lower Casting for 2-Piece Arm; Driver Side |
| 10 | 1 | 16554 | 16-Spring Severe Duty Lower Casting for 2-Piece Arm; Passenger Side |

*Overlength
**Not Shown



p. 800-249-0297 | e. sales@ustarp.com

US Tarp® designs, manufactures, and distributes load containment and cargo protection tarping systems, controls, and tarps for commercial vehicle applications.

ustarp.com